

## H&M Pipe Beveling

In 1934 we produced the industry's very first portable pipe cutting and beveling machine. Determined to be the leader, we continue to set precision, quality and portability standards for not only saddle-type pipe cutting and beveling machines, but also band-type beveling machines, shape cutting attachments and accessories.

We offer the industry's most comprehensive, factory one-year warranty on everything we manufacture. We also provide the industry with our exclusive five-year service guarantee on all H&M Models 0 through 4 Standard Beveling Machines. All of our equipment is produced in the USA.

Our goal is to continuously raise the pipe cutting and beveling machine industry's standard of quality by creating excellent products and providing superior service.



Each machine is constructed of lightweight, hard-anodized aluminum, assuring durability and easy transportation to every job site. Anywhere you go you will be able to cut and bevel 2" to 36" pipe accurately, swiftly and economically, even under the toughest conditions.

- Each ring gear and saddle is precisely machined, assembled and calibrated to  $\pm 0.015$  in concentricity and squareness.
- Each machine is equipped with a rear-mounted short saddle for cutting and beveling in tight locations.
- The rear-mounted saddle allows precise back-beveling operations without sacrificing the machine's integrity.
- The machines' unique split horseshoe design permits easy placement over pipe sections.
- A quick operating boomer assembly secures each machine to the pipe during the entire 360° rotation; no repositioning is necessary.
- The patented Cuboid Spacer System minimizes downtime by keeping the spacers on the machine.



Cuboid Spacer System



Stored Spacers

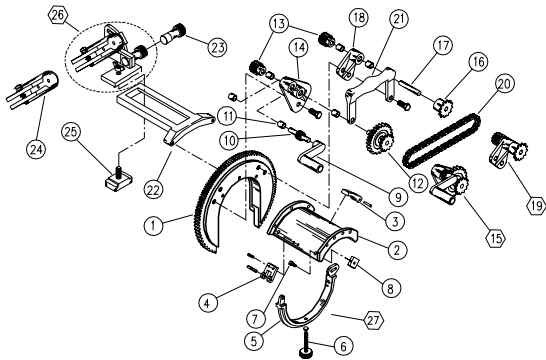


2DH Boomer Strap

| Part No. | Model No. | Standard Pipe Size        |                        |               |               | Net Weight |       | Shipping Weight |        | Shipping Dimensions | Manual   | Motorized | Cuboid Spacer (PATENTED) |
|----------|-----------|---------------------------|------------------------|---------------|---------------|------------|-------|-----------------|--------|---------------------|----------|-----------|--------------------------|
|          |           | INCHES= Nominal Pipe Size | MILLIMETERS= Pipe O.D. | lbs.          | kg.           | lbs.       | kg.   |                 |        |                     |          |           |                          |
| HM00     | 0         | 2"<br>60.32               | 2.5"<br>73.02          | 3"<br>88.90   | 4"<br>114.30  | 7.50       | 3.37  | 12              | 5.40   | 9 x 11 X 11         | Standard | Optional  | Standard                 |
| HM01     | 1         | 3"<br>88.90               | 4"<br>114.30           | 6"<br>168.27  | 8"<br>219.07  | 16         | 7.20  | 23              | 10.35  | 13 x 16 x 17        | Standard | Optional  | Standard                 |
| HM02     | 2         | 7"<br>193.67              | 8"<br>219.07           | 10"<br>273.05 | 12"<br>323.85 | 23         | 10.35 | 35              | 15.75  | 15 x 22 x 22        | Standard | Optional  | Standard                 |
| HM03     | 3         | 14"<br>355.60             | 16"<br>406.40          | 18"<br>457.20 | 20"<br>508.00 | 51         | 22.95 | 77              | 34.65  | 13 x 34 x 34        | Standard | Optional  | Standard                 |
| HM04     | 4         | 20"<br>508.00             | 22"<br>558.80          | 24"<br>609.60 | 26"<br>660.40 | 81         | 36.45 | 118             | 53.10  | 14 x 36 x 45        | Standard | Optional  | Standard                 |
| HM30     | 30        | 24"<br>609.60             | 26"<br>660.40          | 28"<br>711.20 | 30"<br>762.00 | 92         | 41.40 | 133             | 59.85  | 14 x 38 x 48        | Standard | Optional  | Standard                 |
| HM05     | 5         | 30"<br>762.00             | 32"<br>812.80          | 34"<br>863.60 | 36"<br>914.40 | 145        | 65.25 | 250             | 112.50 | 16 x 48 x 61        | Standard | Optional  | Standard                 |

## Beveling Machine Parts Lists

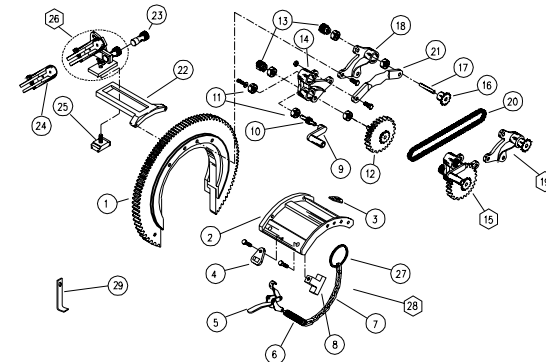
### Model 0



\* Cuboid Spacers are used on all Model 0 machines with SN#63337-C4 and up. For all other machines (unless modified with new saddle), old-style spacers will be required. Order part no. 36-0 Spacer Bolt Assembly (consists of two spacers each for 2" and 3" pipe).

| Item. No | Model 0 Part No. | Description                                      | Qty Req |
|----------|------------------|--|---------|
| 1        | 2A3 & 4-0        | Ring Gear Assembly                               | 1       |
| 2        | 02-0             | Saddle Assembly                                  | 1       |
| 3        | 2DP-0            | Boomer Strap Eye (Pivot)                         | 1       |
| 4        | 2DL-0            | Boomer Strap Eye (Latch)                         | 1       |
| 5        | 20-0             | Boomer Strap                                     | 1       |
| 6        | 27-0             | Boomer   | 1       |
| 7        | 13K-0            | Knurled Thumb Screw                              | 4       |
| 8        | 13C-0*           | Cuboid Spacer                                    | 4       |
| 9        | 8-0-1            | Crank  | 1       |
| 10       | 8C-0             | Crank Pinion                                     | 1       |
| 11       | 26-0             | Bearing  | 6       |
| 12       | 8A10 & 12-0      | Crank Gear Axle Assembly                         | 1       |
| 13       | 09-0             | Pinion Gear                                      | 2       |
| 14       | 18-0             | Double Bearing Bracket                           | 1       |
| 15       | 18A-0            | Double Bearing Bkt. Assembly (Items 9-14)        | 1       |
| 16       | 14-0             | Sprockets  | 1       |
| 17       | 8A-0             | Gear Axle  | 1       |
| 18       | 17-0             | Single Bearing Bracket                           | 1       |
| 19       | 17A-0            | Single Bearing Bkt. Assembly (Items 11,13,16-18) | 1       |
| 20       | 12A-0            | Top Roller Chain                                 | 1       |
| 21       | 23-0             | Handle   | 1       |
| 22       | 01-R             | Torch Arm  | 1       |
| 23       | 007F             | Knob and Cam Assembly                            | 1       |
| 24       | 07CS             | Torch Holder                                     | 1       |
| 25       | 0006             | Base for 5C                                      | 1       |
| 26       | 005C             | Torch Carrier                                    | 1       |
| 27       | 30-0             | Boomer Assembly (Items 3-6)                      | 1       |

### Model 1 and 2

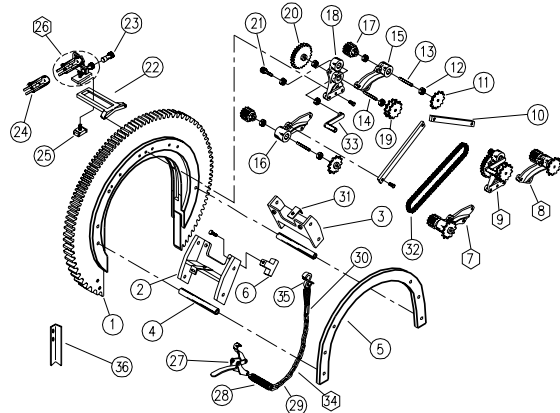


\* Cuboid Spacers are used on all Model 1 machines with SN#64577-C8 and up. For all other machines (unless modified with new saddle), old-style spacers will be required. Order part no. 36-1 Spacer Bolt Assembly (consists of four spacers each for 4", 6" and 8" pipe).

\*\* Cuboid Spacers are used on all Model 2 machines with SN#64709-C12 and up. For all other machines (unless modified with new saddle), old-style spacers will be required. Order part no. 36-2 Spacer Bolt Assembly (consists of four spacers each for 8", 10" and 12" pipe).

| Item. No | Model 1 Part No. | Model 2 Part No. | Description                                      | Qty Req |
|----------|------------------|------------------|--|---------|
| 1        | 2A3 & 4-1        | 2A3 & 4-2        | Ring Gear Assembly                               | 1       |
| 2        | 02-1             | 02-2             | Saddle Assembly                                  | 1       |
| 3        | 2DH-1-2          | 2DH-1-2          | Boomer Strap Eye                                 | 1       |
| 4        | 2D-1-2           | 2D-1-2           | Boomer Strap Eye                                 | 1       |
| 5        | 27-1-6           | 27-1-6           | Boomer   | 1       |
| 6        | 24-1-2           | 24-1-2           | Boomer Spring                                    | 1       |
| 7        | 20-1             | 20-2             | Boomer Chain                                     | 1       |
| 8        | 13C-1*           | 13C-2**          | Cuboid Spacer                                    | 4       |
| 9        | 8-0-1            | 08-2             | Crank  | 1       |
| 10       | 8C-1-2           | 8C-1-2           | Crank Pinion                                     | 1       |
| 11       | 26-1-3           | 26-1-3           | Bearing  | 6       |
| 12       | 8A10&12-1-2      | 8A10&12-1-2      | Crank Gear Axle Assembly                         | 1       |
| 13       | 09-1             | 9-2-3            | Pinion Gear                                      | 2       |
| 14       | 18-1             | 18-2             | Double Bearing Bracket                           | 1       |
| 15       | 18A-1            | 18A-2            | Double Bearing Bkt. Assembly (Items 9-14)        | 1       |
| 16       | 14-1-2           | 14-1-2           | Sprockets  | 1       |
| 17       | 8A-1-3           | 8A-1-3           | Gear Axle  | 1       |
| 18       | 17-1             | 17-2             | Single Bearing Bracket                           | 1       |
| 19       | 17A-1            | 17A-2            | Single Bearing Bkt. Assembly (Items 11,13,16-18) | 1       |
| 20       | 12A-1            | 12A-2            | Top Roller Chain                                 | 1       |
| 21       | 23-1             | 23-2             | Handle   | 1       |
| 22       | 01-R             | 01-R             | Torch Arm  | 1       |
| 23       | 007F             | 007F             | Knob & Cam Assembly                              | 1       |
| 24       | 07CS             | 07CS             | Torch Holder                                     | 1       |
| 25       | 0006             | 0006             | Base of 5C                                       | 1       |
| 26       | 005C             | 005C             | Torch Carrier                                    | 1       |
| 27       | 21-1-2           | 21-1-2           | Key Ring   | 1       |
| 28       | 30-1             | 30-2             | Boomer Assembly (Items 5-7,27)                   | 1       |
| 29       | 16-1             | 16-2             | Foot   | 2       |

### Model 3



\* Cuboid Spacers are used on all Model 3 machines with SN#66260-C20 and up. For all other machines (unless modified with new saddle arms), old-style spacers will be required. Order part no. 36-3 Spacer Bolt Assembly (consists of four spacers each for 14", 16", 18" and 20" pipe).

| Item No. | Model 3 Part No. | Description   | Qty Req |
|----------|------------------|---|---------|
| 1        | 2A3 & 4-3        | Ring Gear Assembly                                  | 1       |
| 2        | 2FL-3            | Saddle Arm (Left)                                   | 1       |
| 3        | 2FR-3            | Saddle Arm (Right)                                  | 1       |
| 4        | 2E-3             | Saddle Spacer Stud                                  | 2       |
| 5        | 2C-3             | Back Saddle Ring                                    | 1       |
| 6        | 13C-3*           | Cuboid Spacer                                       | 4       |
| 7        | 17AL-3           | Single Bearing Bkt. Assembly-L (Items 11-13,16,17)  | 1       |
| 8        | 17AR-3           | Single Bearing Bkt. Assembly-R (Items 11-13,15,17)  | 1       |
| 9        | 18A-3            | Double Bearing Bkt. Assembly (Items 12,14,18-21,33) | 1       |
| 10       | 29-3             | Tie Rod   | 2       |
| 11       | 14-3             | Sprockets   | 2       |
| 12       | 26-1-3           | Bearing   | 8       |
| 13       | 8B-3             | Pinion Gear Axle                                    | 2       |
| 14       | 8A-1-3           | Gear Axle   | 1       |
| 15       | 17R-3            | Single Bearing Bracket (Right)                      | 1       |
| 16       | 17L-3            | Single Bearing Bracket (Left)                       | 2       |
| 17       | 9-2-3            | Pinion Gear   | 2       |
| 18       | 18-3             | Double Bearing Bracket                              | 1       |
| 19       | 12-3             | Sprocket (Double)                                   | 1       |
| 20       | 10-3             | Crank Gear  | 1       |
| 21       | 8C-3             | Crank Pinion  | 1       |
| 22       | 01-R             | Torch Arm   | 1       |
| 23       | 007F             | Knob & Cam Assembly                                 | 1       |
| 24       | 07CS             | Torch Holder  | 1       |
| 25       | 0006             | Base for 5C   | 1       |
| 26       | 005C             | Torch Carrier                                       | 1       |
| 27       | 27-1-6           | Boomer  | 1       |
| 28       | 24-3-6           | Boomer Spring                                       | 2       |
| 29       | 20-3             | Boomer Chain  | 1       |
| 30       | 0021             | Boomer Strap Snap                                   | 2       |
| 31       | 2D-3-30          | Boomer Strap Eye                                    | 2       |
| 32       | 12A-3            | Top Roller Chain                                    | 2       |
| 33       | 8-3-6            | Crank   | 1       |
| 34       | 30-3             | Boomer Assembly (Items 27-30)                       | 1       |
| 35       | 0025             | Boomer Hook   | 1       |
| 36       | 16-3-30          | Foot  | 2       |

## Band Type Pipe Cutting & Beveling Machine

The H&M Band-Type Pipe Cutting and Beveling Machine is fast, accurate and versatile. A single operator can position the band and beveling machine head on 48" diameter pipe in approximately five minutes. Each H&M stainless steel band overlaps numerous pipe sizes making the bands very economical.

- Automatically compensates for oversized or undersized pipe.
- Unaffected by dope or coating on the pipe.
- Accurate-Overlapping squares up the band.
- Band conforms to out-of-round pipe.

The H&M motorized beveling machine head incorporates a rugged, lightweight, cast aluminum chassis that offers the following features:

- Portable (weighs only 18 lbs.).
- Designed to work on all H&M stainless steel bands.
- Equipped with a 90-volt DC motor, (220 volt optional).
- Variable speed control box – forward and reverse.
- Speed range of 2 IPM to 24 IPM.
- Plasma speeds (optional).



Band Style Cutting 48" Pipe

### Bands

Each band includes a drive chain and a coupling – larger bands quoted upon request.

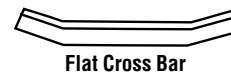
| Part No. | Description           | Pipe Sizes |           | Shipping Weight |       | Shipping Dimensions |                 |
|----------|-----------------------|------------|-----------|-----------------|-------|---------------------|-----------------|
|          |                       | Inches     | mm        | lbs             | kg    | Inches              | mm              |
| OBMH     | Beveling Machine Head |            |           | 20              | 9.05  | 18 x 12 x 10        | 450 x 300 x 250 |
| BAND14   | 14" Band              | 10 to 14   | 250-350   | 6               | 2.71  | 12 x 12 x 10        | 300 x 300 x 250 |
| BAND20   | 20" Band              | 14 to 20   | 350-500   | 8               | 3.62  | 12 x 12 x 10        | 300 x 300 x 250 |
| BAND26   | 26" Band              | 20 to 26   | 500-650   | 9               | 4.07  | 12 x 12 x 10        | 300 x 300 x 250 |
| BAND30   | 30" Band              | 26 to 30   | 650-750   | 10              | 4.52  | 12 x 12 x 10        | 300 x 300 x 250 |
| BAND36   | 36" Band              | 30 to 36   | 750-900   | 12              | 5.43  | 20 x 20 x 13        | 500 x 500 x 325 |
| BAND42   | 42" Band              | 36 to 42   | 900-1050  | 14              | 6.33  | 20 x 20 x 13        | 500 x 500 x 325 |
| BAND48   | 48" Band              | 42 to 48   | 1050-1200 | 15              | 6.79  | 20 x 20 x 13        | 500 x 500 x 325 |
| BAND56   | 56" Band              | 48 to 56   | 1200-1400 | 16              | 7.24  | 20 x 20 x 13        | 500 x 500 x 325 |
| BAND60   | 60" Band              | 56 to 60   | 1400-1500 | 17              | 7.69  | 20 x 20 x 13        | 500 x 500 x 325 |
| BAND64   | 64" Band              | 60 to 64   | 1500-1600 | 18              | 8.14  | 20 x 20 x 13        | 500 x 500 x 325 |
| BAND68   | 68" Band              | 64 to 68   | 1600-1700 | 19              | 8.60  | 20 x 20 x 13        | 500 x 500 x 325 |
| BAND72   | 72" Band              | 68 to 72   | 1700-1800 | 20              | 9.05  | 20 x 20 x 13        | 500 x 500 x 325 |
| BAND76   | 76" Band              | 72 to 76   | 1800-1900 | 21              | 9.50  | 20 x 20 x 13        | 500 x 500 x 325 |
| BAND80   | 80" Band              | 76 to 80   | 1900-2000 | 22              | 9.95  | 20 x 20 x 13        | 500 x 500 x 325 |
| BAND84   | 84" Band              | 80 to 84   | 2000-2100 | 23              | 10.40 | 20 x 20 x 13        | 500 x 500 x 325 |
| BAND90   | 90" Band              | 84 to 90   | 2100-2250 | 24              | 10.86 | 20 x 20 x 13        | 500 x 500 x 325 |
| BAND96   | 96" Band              | 90 to 96   | 2250-2400 | 25              | 11.31 | 20 x 20 x 13        | 500 x 500 x 325 |
| BANDBOX  | Storage Box           |            |           | 38              | 17.25 | 24 x 24 x 10        | 600 x 600 x 250 |

### General Pipe Clamps

General Standard, Hydraulic and Ratchet Pipe Clamps for 2" to 60" diameter pipe. Each is hinged for easy positioning around the pipe and is available with flat or arched cross bars. The Standard Pipe Clamp features a lever and a cam to tighten the clamp around both ends of adjoining pipe.

General Pipe Clamps are designed for the sole purpose of aligning pipe ends while welding. They are NOT to be used to support the weight of the pipeline while lifting or moving, nor are they to be used with shims, wedges or cheaters.

**Note: All part numbers listed are General Standard Style with flat cross bars.**



| Part No. | Size                            | Weight |
|----------|---------------------------------|--------|
| GEN02    | 2"                              | 12#    |
| GEN02.5  | 2.5"                            | 17#    |
| GEN03    | 3"                              | 17#    |
| GEN04    | 4"                              | 19#    |
| GEN05    | 5"                              | 33#    |
| GEN06    | 6"                              | 32#    |
| GEN08    | 8"                              | 33#    |
| GEN10    | 10"                             | 51#    |
| GEN12    | 12"                             | 53#    |
| GEN14    | 14"                             | 70#    |
| GEN16    | 16"                             | 102#   |
| GEN18    | 18"                             | 110#   |
| GEN20    | 20"                             | 120#   |
| GEN24    | 24"                             | 126#   |
| GEN28    | 28"                             | 148#   |
| GEN30    | 30"                             | 160#   |
| GENDOLLY | from 3" to 30"<br>pipe diameter |        |

### General Pipe Dolly

This one piece body with adjustable rollers easily accommodates pipe sizes 3" to 30". Using a pair of pipe dollies allows the pipe to be safely supported and rotated, assisting in multiple welding tasks.



## Band Boxes / Torch Holder / Cuboid Spacers

### Storage Boxes

Protect your investment during transportation and storage by using our lightweight aluminum storage boxes.

- Prevent damage to the machines and their precision parts.
- These storage boxes are for all Models No. 0 through No. 4 Standard Beveling Machines.



| Part No. | Description |
|----------|-------------|
| BOX00    | 0Mach Box   |
| BOX01    | 1Mach Box   |
| BOX02    | 2Mach Box   |
| BOX03    | 3Mach Box   |
| BOX04    | 4Mach Box   |

### Model "C" Adjustable Torch Holder

The Model "C" Adjustable Torch Holder features two rack-and-pinion driven, dove-tailed slide assemblies making horizontal and vertical movements easy. Its smooth, accurate torch adjustments eliminate blow holes, allowing the torch height to be altered even when the cutting torch is in motion.

- No special modifications are necessary with most torch lengths.
- A built-in protractor gives precise bevel angles every time.
- Model "C" fits all Standard H&M Beveling Machines except the Model No. 0, which requires a special adapter plate.



**Part No. C-ADJ**

### Motorization Kits

For large pipe work or fabrication H & M highly recommends its motorization kits where 115 AC power is available.

- Precise torch speed.
- Increased production and consistent, high-quality.
- Beveled edges with every pipe cutting or beveling operation.
- Speed ranges are sufficient for most plasma cutting applications.



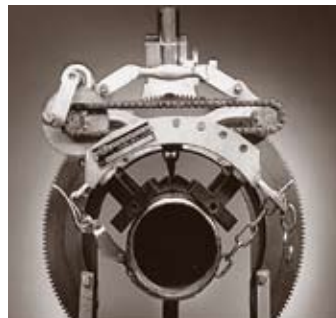
| Part No. | Description     |
|----------|-----------------|
| KIT00    | Mach kit Model0 |
| KIT01    | Mach kit Model1 |
| KIT02    | Mach kit Model2 |
| KIT03    | Mach kit Model3 |
| KIT04    | Mach kit Model4 |
| KIT06    | Mach kit Model6 |

### Cuboid Spacer System

H&M's patented Cuboid Spacer System relieves frustration and downtime in looking for lost spacers, because the spacers never leave the machine.

- Six-sided form with rectangular sides.
- Three specific thicknesses conform to different pipe sizes.
- Four cuboids used to quickly set up machine.

Each size of every cuboid spacer is clearly stamped to ensure cutting the correct pipe size. When not in use the cuboid spacers are securely housed on the back of the saddle. It's a no-lose proposition in time-saving productivity.



| Part No. | Description   |
|----------|---------------|
| 13C-0    | Mach Spacer0  |
| 13C-1    | Mach Spacer1  |
| 13C-2    | Mach Spacer2  |
| 13C-3    | Mach Spacer3  |
| 13C-30   | Mach Spacer30 |
| 13C-4    | Mach Spacer4  |

## Adjustable Pipe Clamp

The adjustable pipe clamp is manufactured using ductile cast iron (APC16) or aluminum (APC16-A). The pipe alignment V's are cast into the clamp and precisely machined, assuring perfect alignment of pipe ends. The clamp is lightweight (APC16 - 31 lbs. net, APC16-A - 16 lbs.) and portable. A convenient carrying handle has been cast into the pipe clamp allowing easy, safe transportation to any job site. One person can position the clamp and start welding in about two minutes for most applications and pipe sizes. Comes complete and ready to align 2" to 16" diameter pipe. One adjustable clamp does the work of 12 cage-type pipe clamps. Acme 3/4-6" threaded bolts and nuts are used to tighten the chain around pipe. Each adjusting nut is fitted with its own handle. No extra wrenches or ratchet handles are required. The acme threaded bolts, nuts and chain are captive to the pipe clamp, eliminating lost or misplaced items.

**Part No. APC16-A** (Aluminum)

**Part No. APC16** (Cast Iron)



## Precision-Spacing Wedges

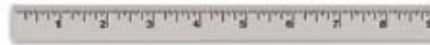
H&M's Precision Spacing Wedges are manufactured of high-grade carbon steel, precision ground and heat-treated. Available in two sizes, they accommodate small to large diameter pipe.

**Part No. PW-L**- Large Pipe Wedge- 1 3/4" X 8-3/4" X 1/4"

**Part No. PW-S**- Small Pipe Wedge- 3/4" X 4" X 3/16"



Part No. PW-L



Part No. PW-S

## Master Chain Clamp

A versatile clamping system designed to increase productivity. One person can quickly and safely perform perfect fit-ups of flanges, tees and elbows in minutes. Each Master Chain works 4" to 16" diameter pipe fittings. Additional chain links and jackbars can be added for larger pipe sizes. The clamp weighs 28 lbs. when fully assembled, but can be streamlined when working smaller sized pipe. Set up, positioning and alignment for welding is now faster.

**Part No. CC-HD**



## Magnetic Tool Release

This unique device utilizes two strong magnets securing tools and welding accessories to d-rings, belt loops or any area where quick access is required. Just tug on the tool to release it for use. When finished wave the magnet within an inch of the mating magnet. It will immediately jump to a secure position.

- Seven pounds of breaking force.
- Does not include striker.

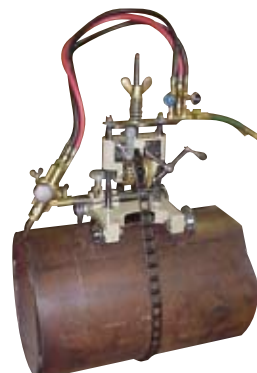
**Part No. MTR7**



## Chain-Type Pipe Machine

- Pipe capacity (4" to 24").
- Additional chain links can be purchased for larger pipe sizes.
- Cutting torch and three tips included.
- Control valves for fuel gas, pre-heat and cutting oxygen included.
- Manual drive (brass worm gears provide smooth motion).
- A handy clutch allows quick rotation of the machine around the pipe to verify position and square up the chain.
- Torch holder racks in, out, up and down.
- Torch holder can be positioned at any angle.

**Part No. HMC224**



## Flange Pins / Pipe Templates

### Quick-Acting Flange Pins

Welding occurs in minutes with very little fit-up time. Just tilt the knob to bypass the flange pin threads, then straighten the knob to grip the threads for tight, positive clamping. Removal is just as quick and easy. Loosen the knob, tilt it and remove. Endless threading and unthreading of the flange pins has been eliminated. H&M's precision, conical flange pins provide perfect centering on 5/8" to 1-1/2" bolt holes.

**Part No. QAFP** (Mild Steel)

**Part No. QAFP-S** (Stainless Steel)



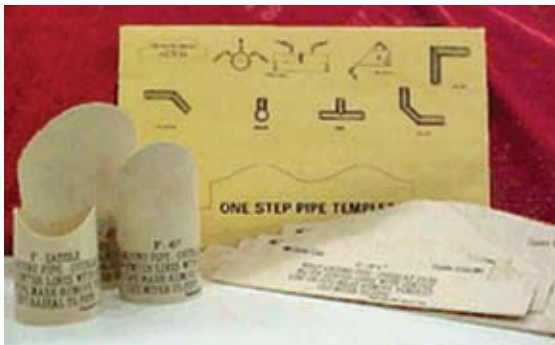
**Part No. QAFP (Mild Steel)**



### Pipe Template Sets

The complete wrap around templates from 1" to 42" pipe, with simple instructions imprinted on each template. There are 2 or 3 pipe sizes per set for diameters up to 6" and single pipe size templates for sizes 8", 10" and 12"

- Templates available for 22 1/2° angles, 45° angles and 90° risers or saddles for each pipe size listed below.
- Made of durable materials, so your templates will last and last for many uses.



**Part No.0001**

| Part No. | Description                | Pipe Size | O.D.    | Wt. per Ft. |
|----------|----------------------------|-----------|---------|-------------|
| 0000     | For 1" to 1 1/2" pipe      |           |         |             |
| 0114     | For 1-1/4" pipe            |           |         |             |
| 0001     | For 2", 2-1/2" and 3" pipe | 2"        | 2-3/8"  | 3.652       |
|          |                            | 2-1/2"    | 2-7/8"  | 5.790       |
|          |                            | 3"        | 3-1/2"  | 7.570       |
| 0002     | For 4" and 6" pipe         | 4"        | 4-1/2"  | 10.790      |
|          |                            | 6"        | 6-5/8"  | 18.974      |
| 0008     | For 8" pipe                | 8"        | 8-5/8"  | 28.544      |
| 0010     | For 10" pipe               | 10"       | 10-3/4" | 40.483      |
| 0012     | For 12" pipe               | 12"       | 12-3/4" | 48.995      |
| 0014     | For 14" pipe               | 14"       | 14"*    | 53.941      |
| 0016     | For 16" pipe               | 16"       | 16"*    | 61.746      |
| 0018     | For 18" pipe               | 18"       | 18"*    | 69.753      |
| 0020     | For 20" pipe               | 20"       | 20"*    | 77.619      |
| 0024     | For 24" pipe               | 24"       | 24"*    | 93.509      |
| 0030     | For 30" pipe               | 30"       | 30"*    | 117.267     |
| 0036     | For 36" pipe               | 36"       | 36"*    | 141.017     |
| 0042     | For 42" pipe               | 42"       | 42"*    | 164.640     |

\* The O.D. of pipe does not change – on different wall thickness, only the I.D. changes.