

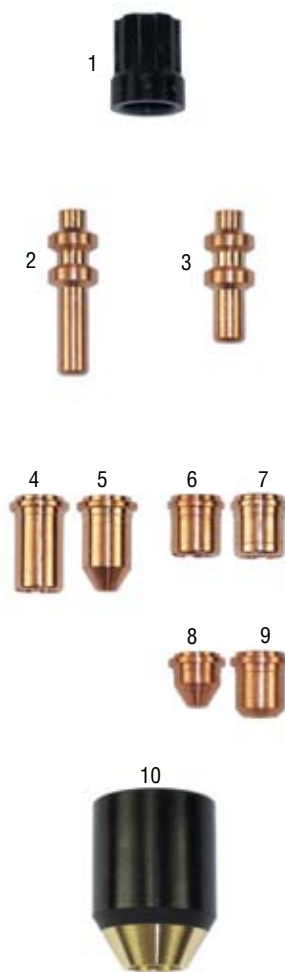
Hypertherm®

MAX20®



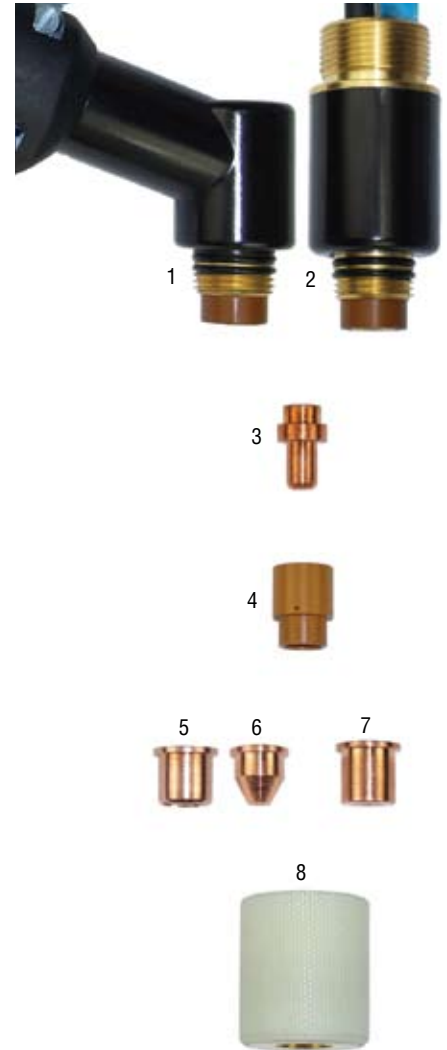
Item	Part No.	Description
1	020239	Swirl ring
2	020382	Electrode, extended
3	020381	Nozzle, extended
4	020218	Retaining cap

MAX40CS®, MAX42®, MAX43®



Item	Part No.	Description
1	T-4452*	Swirl ring
2	T-4451*	Electrode, extended
3	T-4450*	Electrode
4	020546	Nozzle, extended 40A
5	120023	Nozzle, extended pipe
6	020395	Nozzle, unshielded 50A
7	020350	Nozzle, unshielded 40A
8	020542	Nozzle, pipe 40A
9	020539	Nozzle, gouging
10	020930	Retaining cap

MAX40®



Item	Part No.	Description
1	020122	Hand torch w/handle
2	020114	Machine torch
3	020103	Electrode
4	020101	Swirl ring
5	020115	Nozzle, hand
6	020131	Nozzle, pipe
7	020102	Nozzle, machine
8	020104	Retaining cap
	<b>057112</b>	<b>Torch package 25 ft.</b>

\*A unique design which enhances performance and differs from OEM designs.

# Hypertherm® Torches

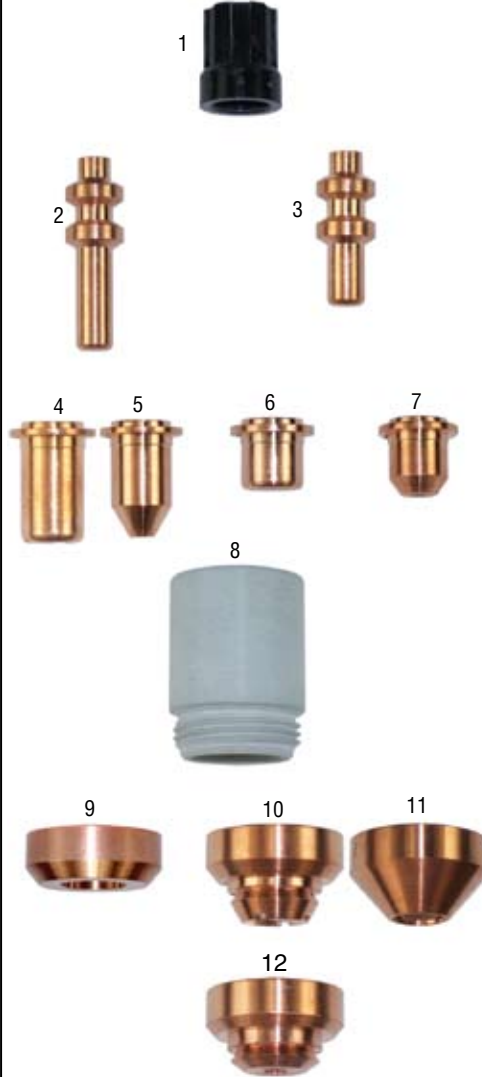
## Hypertherm®

### POWERMAX600®



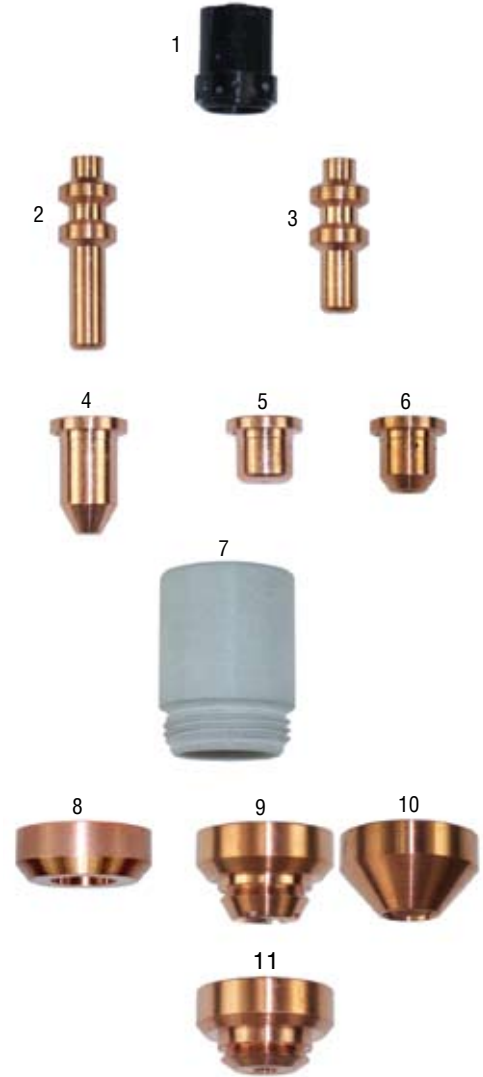
Item	Part No.	Description
1	T-4453*	Swirl ring
2	T-4451*	Electrode, extended
3	T-4450*	Electrode
4	120606	Nozzle, extended pipe 35A
5	120600	Retaining cap
6	120303	Deflector ring

### POWERMAX800®



Item	Part No.	Description
1	T-4452*	Swirl ring
2	T-4451*	Electrode, extended
3	T-4450*	Electrode
4	120304	Nozzle, extended pipe 50A
5	120305	Nozzle, extended pipe 50A
6	120282	Nozzle, shielded 50A
7	120281	Nozzle, gouging 50A
8	120600	Retaining cap
9	120303	Deflector ring
10	T-9824	Shield, hand
11	120608	Shield, gouging
12	T-9825	Shield, machine

### POWERMAX900®



Item	Part No.	Description
1	T-4453*	Swirl ring
2	T-4451*	Electrode, extended
3	T-4450*	Electrode
4	120606	Nozzle, extended pipe 35A
5	120578	Nozzle, extended pipe 55A
6	120577	Nozzle, shielded 55A
7	120607	Nozzle, gouging 55A
8	120600	Retaining cap
9	120303	Deflector ring
10	T-9824	Shield, hand
11	120608	Shield, gouging
12	T-9825	Shield, machine

\*A unique design which enhances performance and differs from OEM designs.

Hypertherm®

MAX100®



Item	Part No.	Description
1	020189	Hand torch w/handle
2	020201	Machine torch
3	020191	Electrode, air
	020193	Electrode, nitrogen
4	020194	Swirl ring
5	020203	Nozzle, 40A
	020345	Nozzle, 80A
	020195	Nozzle, 100A
6	020337	Nozzle, shielded 100A
7	020336	Retaining cap
8	020333	Deflector
	<b>059076</b>	<b>Torch package 25 ft.</b>

MAX200®



Item	Part No.	Description
1	020470	Machine torch
2	020414	Electrode, air/oxygen
3	020616	Nozzle, 100A oxygen
	020611	Nozzle, 100A air
4	020608	Nozzle, 100A air, N <sub>2</sub> , ArH <sub>2</sub>
	020605	Nozzle, 100A oxygen

POWERMAX1000®



Item	Part No.	Description
1	T-4456*	Swirl ring
2	T-4454*	Electrode
3	220006	Nozzle, extended 40A
4	220007	Nozzle, extended 60A
5	120928	Retaining cap
6	120979	Deflector ring

\*A unique design which enhances performance and differs from OEM designs.

## Hypertherm® Torches

### Hypertherm®

#### POWERMAX1100®



#### POWERMAX1250®



#### POWERMAX1650®



Item	Part No.	Description
1	120517	Electrode, extended
2	120473	Electrode
3	120474	Swirl ring
4	T-2531*	Nozzle, 80A
5	T-2530*	Nozzle, 40A
6	T-2532*	Nozzle, extended
7	T-2527*	Tip spring
8	120519	Deflector

Item	Part No.	Description
1	T-4456*	Swirl ring
2	T-4454*	Electrode
3	120980	Nozzle, extended 80A
	220007	Nozzle, extended 60A
4	220006	Nozzle, extended 40A
5	120928	Retaining cap
6	120979	Deflector ring

Item	Part No.	Description
1	T-4456*	Swirl ring
2	T-4454*	Electrode
3	120980	Nozzle, extended 80A
	220007	Nozzle, extended 60A
4	220006	Nozzle, extended 40A
5	220048	Retaining cap
6	120979	Deflector ring

\*A unique design which enhances performance and differs from OEM designs.

Thermal Dynamics®

PCH/M-35



Item	Part No.	Description
1	9-5807	Hand torch, Dura 70°
2	9-6506	Electrode, long life
3	9-6006	Electrode
4	9-6507	Gas distributor, long life
5	9-6007	Gas distributor
6	9-6501	Tip, drag long life
7	9-6500	Tip, stand off long life
8	9-6001	Tip, drag
9	9-6000	Tip
10	9-6003	Shield cup
11	9-6503	Shield cup, long life
	<b>2-6053</b>	<b>Torch package 25 ft.</b>

PCH/M-51



Item	Part No.	Description
1	9-5635	Hand torch
2	9-5634	Machine torch
3	9-5633	Electrode
4	9-5631	Tip
5	9-5630	Shield cup
6	8-5526	Shield cup, crown
7	8-2152	Shield cup, shock resistant
	<b>2-2860</b>	<b>Torch package 25 ft. (Button)</b>
	<b>2-2985</b>	<b>Torch package 25 ft. (Trigger)</b>

PCH/M-52



Item	Part No.	Description
1	9-5642	Hand torch
2	9-5643	Hand torch, machine
3	9-5619	Electrode, air
	9-5711	Electrode, nitrogen
4	9-5618	Tip, 45A
	9-5707	Tip, 70A
	9-5708	Tip, 100A
5	9-5617	Shield cup
6	9-5694	Shield cup, crown
7	9-5781	Shield cup, phenolic
	<b>2-2936</b>	<b>Torch package 25 ft.</b>

Thermal Dynamics® Torches

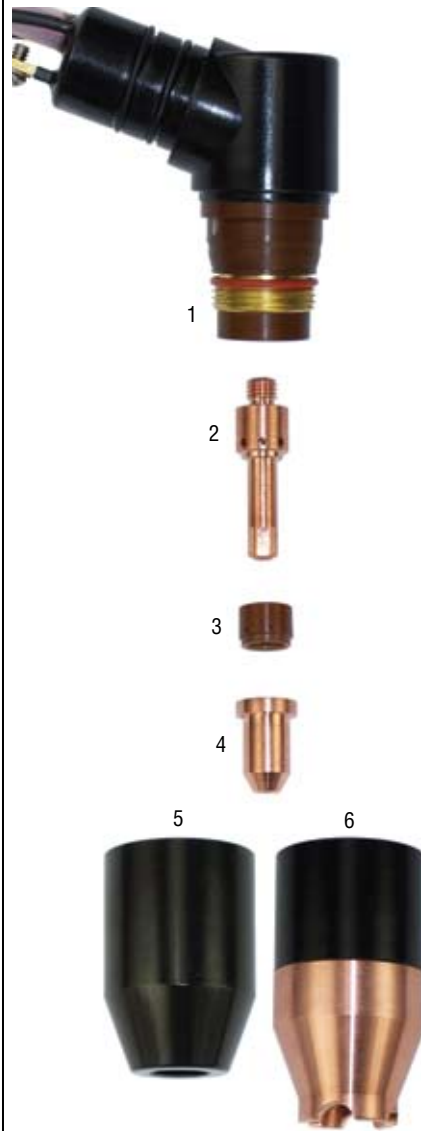
Thermal Dynamics®

PCH/M-6B



Item	Part No.	Description
1	8-6615	Electrode holder
2	8-6569	Gas distributor
3	8-6571	Liner w/O-ring
4	8-6578	Electrode
5	8-6572	Tip, 400A
	8-6582	Tip, 300A
	8-6575	Tip, 200A
6	8-6581	Outer insulator
7	8-6514	End piece
8	8-6515	End cap

PCH/M-75



Item	Part No.	Description
1	8-7510	Hand torch, 70°
2	8-7502	Electrode
3	8-7501	Gas distributor
4	8-7503	Tip, drag 35A
	8-7505	Tip, 70A
	8-7504	Tip, 55A
5	8-7500	Shield cup
6	8-7507	Shield cup, crown
	<b>2-7501</b>	<b>Torch package 25 ft.</b>

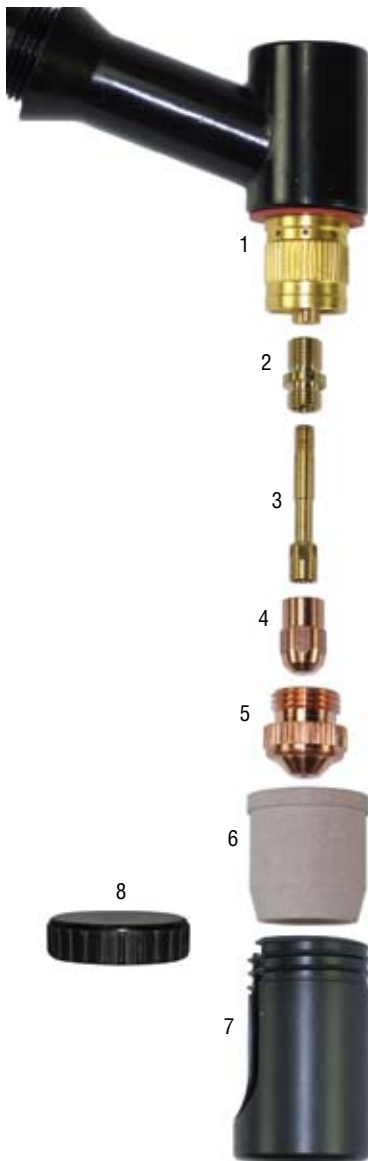
PCH/M-150



Item	Part No.	Description
1	9-5749	Electrode, air
	9-5754	Electrode, nitrogen
	9-5760	Electrode, oxygen
2	9-5746	Tip, air 150A
	9-5747	Tip, air 100A
	9-5767	Tip, nitrogen 150A
3	9-5751	Tip, oxygen 1500A
4	9-5750	Shield cup
5	9-5790	Shield cup, metal

ESAB® / L-TEC®

PT-17A



Item	Part No.	Description
1	20008	Hand torch
2	20053	Electrode adapter
3	19114	Baffle tube
4	19918	Electrode
5	20056	Tip, 100A
	19917	Tip, 80A
	19916	Tip, 70A
	19915	Tip, 50A
6	19124	Heat shield
7	19502	Shroud
8	19498	Shroud cap
	19999	Torch package 25 ft.

PT-20AM



Item	Part No.	Description
1	21359	Machine torch
2	21332	Electrode adapter assembly
3	21150	Electrode
4	21328	Nozzle, 100A
	21329	Nozzle, 70A
	21330	Nozzle, 50A
5	21326	Heat shield

PT-23



Item	Part No.	Description
1	21421	Hand torch
2	33366	Electrode
3	33367	Swirl baffle
4	33418	Nozzle, 80A
	33369	Nozzle, 50A
	33368	Nozzle, 30A
	33371	Retaining nut
5	33371	Retaining nut
6	33419	Shield cap

ESAB® / L-TEC® Torches

ESAB® / L-TEC®

5 Plasma and Accessories

PT-25



Item	Part No.	Description
1	21625	Hand torch
2	21657	Electrode holder
3	21595	Electrode, air/N <sub>2</sub>
4	21599	Nozzle, gouging
	21598	Nozzle, 150A
	21597	Nozzle, 100A
	21596	Nozzle, 50A
5	21654	Heat shield

PT-27



Item	Part No.	Description
1	21610	Hand torch
2	21619	Valve pin (OEM torch only)
3	33366	Electrode
4	33367	Swirl baffle
5	33418	Nozzle, 80A
	33369	Nozzle, 50A
	33368	Nozzle, 30A
6	21616	Heat shield
	<b>21620</b>	<b>Torch package 25 ft. (plug)</b>
	<b>21661</b>	<b>Torch package 25 ft. (lug)</b>

PT-31



Item	Part No.	Description
1	20072	Hand torch
2	18205	Electrode, standard
	19683	Electrode, XL
3	18785	Swirl baffle, standard
	20463	Swirl baffle, XL, XT
4	18866	Tip, standard, 30A
5	18204	Shield cup, standard
6	20862	Electrode, XT
	20861	Tip, XT, 50A
7	21008	Tip, XT, 40A
	20860	Tip, XT, 30A
8	20282	Shield cup, standard, XL, XT
	<b>20080</b>	<b>Torch package 25 ft.</b>



Miller®

**APT 5000**



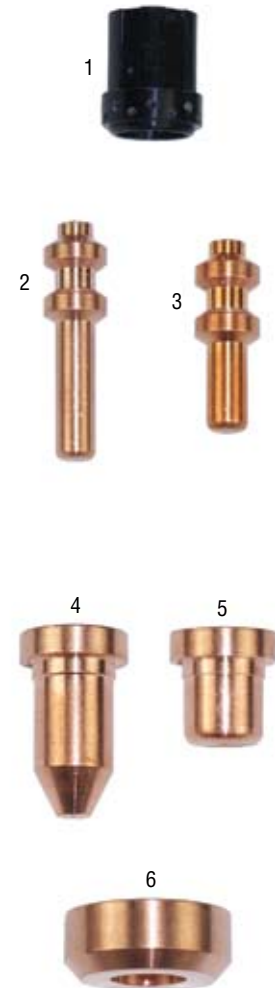
Item	Part No.	Description
1	123899	Electrode
2	134338	Tip "H"
	123898	Tip "S"
4	123897	Shield cup

**ICE 25C**



Item	Part No.	Description
1	176657	Swirl ring, 25A
2	176655	Electrode, 25A
3	176656	Tip, 25 AMP
4	176658	Shield cup, 25A

**ICE 40C / 55C / 55CM**



Item	Part No.	Description
1	T-4453*	Swirl ring
2	T-4451*	Electrode, extended
3	T-4450*	Electrode
4	192052	Tip, extended 35A
	192056	Tip, extended 55A
5	204325	Tip, 40 AMP (ICE-40C)
6	177888	Deflector

\*A unique design which enhances performance and differs from OEM designs.

## Miller® Torches

### Miller®

#### ICE 50C



Item	Part No.	Description
1	T-4452*	Swirl ring
2	T-4460*	Electrode, extended
3	T-4449*	Electrode, standard
4	177876	Tip, extended
5	177890	Tip, standard
6	177888	Deflector

#### ICE 70C



Item	Part No.	Description
1	171257	Hand torch, w/handle
2	173816	Electrode, extended
3	169217	Electrode, standard
4	169222	Swirl ring
5	173815	Tip, extended, .050
	173814	Tip, extended, .059
6	169220	Tip, non-shielded, 80A
	169227	Tip, non-shielded, 100A
7	169219	Tip, shielded, 80A
	169226	Tip, shielded, 100A
8	169225	Deflector

#### ICE 80T / TM / CX



Item	Part No.	Description
1	T-4456*	Swirl ring, 10-80A
2	T-4461*	Electrode, 40-80A
3	212729	Tip, 40A

\*A unique design which enhances performance and differs from OEM designs.

## PlazCraft<sup>®</sup> Torches

### How To Order

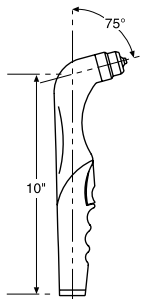
1. Choose a **Torch Package**.
2. Choose a **Hookup Kit** for your power supply.
3. Choose the appropriate **Accessory Kit** for your cutting application.

**Note:** Replacement parts are available when the time comes to maintain your torch in the field. Modular design means that PlazCraft<sup>®</sup> truly is "the last plasma torch you'll ever buy."

### 1 Torch Packages

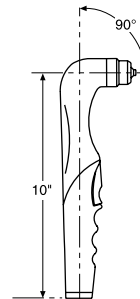
- Each torch package includes an assembled torch head, installed shield cup, cutting tip, electrode and cable.
- Requires a hookup kit which is sold separately.
- Optional accessory kits sold separately.
- Machine torches include an RC-2 Remote Pendant Control plus 24 and 32 Pitch Racks.
- All PlazCraft<sup>®</sup> torches require pilot arc start.
- Maximum torch power rating for all torches is 12kw.

**Caution! Do not use with DC current when welding.**



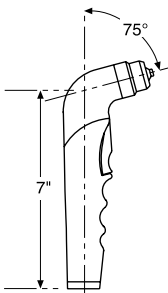
Part No.	Description
PC2-30-25	60 AMP Hand Torch with 75° head and 25' cable

.055 cutting tip standard.



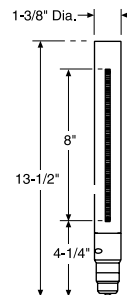
Part No.	Description
PC2-40-25	100 AMP Hand Torch with 90° head and 25' cable
PC2-40-50	100 AMP Hand Torch with 90° head and 50' cable

.075 cutting tip standard.



Part No.	Description
PC2-35-25	100 AMP Hand Torch with 75° head and 25' cable
PC2-35-50	100 AMP Hand Torch with 75° head and 50' cable

.075 cutting tip standard.



Part No.	Description
PC2-30M-25	100 AMP Machine Torch and 25' cable
PC2-30M-50	100 AMP Machine Torch and 50' cable

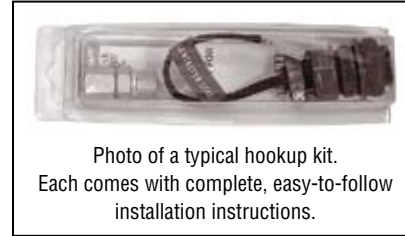
.075 cutting tip standard.

**Torch Packages**

**2 Hookup Kits**

Each hookup kit includes connection fittings for the selected power supply.

Power Supply	Part No.	Notes
<b>Daiden®</b>		
SC-60P	PHK-CAE	
<b>ESAB®</b>		
PCS-90	PHK-GAI	
Sidewinder 55, 105	PHK-AAA	
PCM-750i, 875i, 1000i	PHK-EBI	
<b>Harris</b>		
System 50, 65, 100, 150	PHK-AAG	PlazCraft torch package connects directly to the Harris Uniplug.
<b>Hobart®</b>		
Fab Shop	PHK-CBN	
Smoothcut 30	PHK-EXI	
Smoothcut 50 single gas	PHK-GAI	
Smoothcut 50 dual gas	PHK-GEM	
Smoothcut II 35A, 60A, 100A	PHK-ACD	
<b>Hypertherm®</b>		
Max 40 (H/F start)	PHK-BDH	
Max 80, Max 100	PHK-BDH	
<b>Lincoln®</b>		
Procut 60	PHK-ACK	
<b>L-Tec®</b>		
PCM-31, 32i, VPi, 54i	PHK-EXI	L-TEC PCM-82i only: PHK-GAI will work with single connector plug; will not work with dual connector plug.
PCS-80i	PHK-EXI	
PCS-40	PHK-BDH	
PCM-50	PHK-GEM	
PCM-50A, 70, 80, 82i, 84i	PHK-GAI	
PCS-80	PHK-GAI	
PCM-101	PHK-AFI	
PCM-100 Single Gas	PHK-GAI	
PCM100 Dual Gas	PHK-GEM	
PCM-750i, 1000i	PHK-EII	
<b>Miller®</b>		
Plazcut 60/Zipcut	PHK-CAE	Miller PlazCut machines with serial numbers beginning with JG, JF and JE will not work with PlazCraft torches.
Spectrum 250, 500, 750	PHK-ACC	
Spectrum 700, 1000, 1250, PLUS	PHK-BDH	
<b>Multiquip MQ®</b>		
PCX-50SS	PHK-ACJ	
<b>Nu-Tecsys®</b>		
PCA-30/60, 65	PHK-FCG	
<b>OTC®</b>		
D-5000, D-7000	PHK-ACJ	
<b>P-Tron®</b>		
P-Tron 75,100	PHK-ACJ	



Power Supply	Part No.	Notes
<b>Pow-Con®</b>		
Starcut	PHK-BDH	
<b>Smith®</b>		
SPC-30, 20-50, 40-80	PHK-FGL	
<b>Thermal Dynamics®</b>		
PAK-3XR, PAK-5XR, 625XR, 750XR, 1000XR, 1250XR, PAK-5XT, PAK-6XR, 7XR, 8XR, 10XR, PAKMASTER 50 (internal connection), 50XL, 75XL, 100, 100XL	PHK-AAA	PlazCraft torch body replaces the PCH-51 and the RTH-40S torches directly. The original cable assembly may be used.
PAK-4XI, PAK-6Xi, 2XT-220, DYNOPAC 110	PHK-KAG	PlazCraft torch packages connect directly to Thermal Dynamics Smart Plug®.
PAK-10, PAKMASTER 50 (w/smart torch)	PHK-AFI	Adjust Point Procedure (where applicable). Set air pressure to 60-70 psi. Adjust points gap closed until unable to establish pilot arc when trigger is actuated. Using very small increments, adjust points gap until pilot arc is just able to be established when trigger is actuated. Points are now adjusted properly.
STAK-PAK® 35 (two modules) 70A (three modules) 105A	PHK-SPK	

**3 Accessory Kits**

Each kit is designed for a specific application. Additional models available, call customer service for more information.

Part No.	Contents		
<b>Accessory Kit for Applications to 100 AMPS</b>			
AK2-H	1 ea. 10 ea. 5 ea. 5 ea. 5 ea. 2 ea. 1 ea.	30-7 PC2-3 PC2-067 PC2-071 PC2-075 1640002 1640003	Electrode Wrench Electrodes .067" Cutting Tips, 80 AMP .071" Cutting Tips, 90 AMP .075" Cutting Tips, 100 AMP Fiberglass Shield Cups 1/8" Metal Standoff
<b>Accessory Kit</b>			
AK2-M	1 ea. 5 ea. 3 ea. 5 ea. 5 ea. 2 ea. 1 ea.	30-7 PC2-3 PC2-048 PC2-055 PC2-060 1640002 1640003	Electrode Wrench Electrodes .048" Cutting Tips, 40 AMP .055" Cutting Tips, 50 AMP .060" Cutting Tips, 60 AMP Fiberglass Shield Cups 1/8" Metal Standoff

## The First Universal Plasma Torch!

The 1Torch™ RPT torch is the first plasma cutting torch that performs with virtually all plasma cutting power supplies. The 1Torch™ works with high frequency start systems, CD start systems, touch start systems and moving parts (blow back) start systems. Install the 1Torch™ on your current plasma power supply and you immediately benefit from the latest in high performance torch technology available.



### One Year Torch & Leads Warranty

#### Ergonomic Torch Handle

With a new, innovative, easy-to-use torch trigger release, encapsulated protected torch head and precisely engineered grip, the 1Torch™ RPT torch is both easy and comfortable to use.

#### Extended or Protected Consumable Parts

We designed our consumable parts to adapt to your cutting style. By simply changing the shield cup, you can either have:

- An extended tip for greater visibility and control and precision drag cutting at low power.
- A protected tip for on-the-plate drag cutting at high power up to 100 amps.

#### Precision Engineered Torch Consumable Parts

The 1Torch™ RPT torch introduces a completely new tip technology. Plasma gas management is an integral part of the tip design. Each tip is uniquely tuned to optimize cut performance at its rated cutting current. The result is precision gas management, longer consumable parts life and better cut performance across the entire range of 1Torch™ tips.

#### Lower Consumable Parts Inventories and Costs

The less than 20 consumable parts used with the 1Torch RPT torch can replace over 575 different consumable parts used over a broad range of plasma systems.

#### Improved Leads

1Torch™ Leads are lightweight, extremely flexible and tough – the ideal combination of durability and ease of use.

## Selecting the Right Torch Package for Your Needs . . . It's as easy as 1, 2, 3!

### 1. Torch and Leads Selection

The torch and leads selection chart gives you all the information you'll need to select the right torch. Torches are grouped into two sections – SL60™ and SL100™ hand torches. Find the appropriate section, decide whether the standard RPT connection or the ATC™ torch connection is right for you, then select the torch with the desired amperage range and leads length.

### 2. Adapter Kit Selection

Select the appropriate adapter kit from the adapter kit selection chart. If you selected a torch with the ATC connection, you will also need an ATC receptacle adapter (see torch and leads selection chart).

### 3. Spare Parts Selection

From the spare parts selection chart, select an RPT spare parts kit or specific consumable parts that best suit your cutting requirements.

## Torch Connection Options

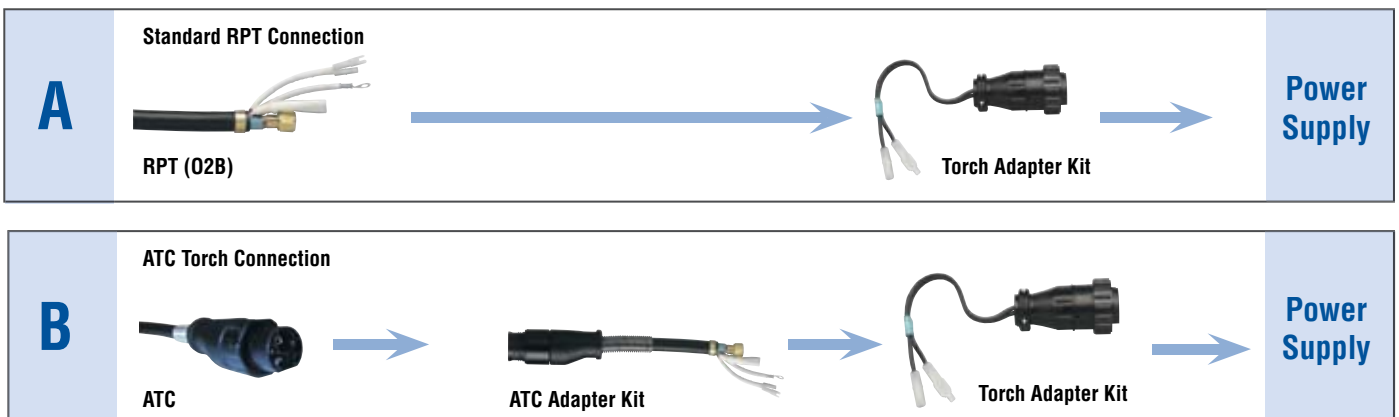
The diagram below shows the differences between the Standard RPT and the ATC Torch connections.

### ATC™ (Advanced Torch Connector) Quick Disconnect Option

Our quick disconnect design brings extra flexibility to any plasma system. Imagine being able to change out a damaged plasma cutting torch, easily convert from a hand to a machine torch operation, or simply put on a different size torch all in the matter of a few seconds and not have to use any tools to complete the task!

### ATC™ Lead Extensions for Improved Versatility

You can add substantial flexibility and versatility to your cutting operations with the use of lead extensions. Quick disconnect lead extensions, in 15 ft., 25 ft. and 50 ft. lengths, make it easy and efficient to add or subtract lead length according to the job requirements.



**1Torch™**

**Torch and Lead Selection**

Listed below are the torch and lead selection charts for the SL60™ and SL100™ Hand 1Torch™ RPT torches.

**Ordering Information**

**Hand Torches**

**SL60™**

Light/Medium Duty Torch 20-60 Amps



**SL100™**

Medium/Heavy Duty Torch 30-100 Amps



**A**

**Standard RPT (O2B) Torch Connection**

**Torch and Leads**

SL60 Hand Torch (20-60 Amps)



Part No.	Description
7-5200	SL60, 75°, 20' (6.1m) Torch/Leads
7-5201	SL60, 75°, 50' (15.2m) Torch/Leads

**Standard RPT (O2B) Torch Connection**

**Torch and Leads**

SL100 Hand Torch (30-100 Amps)



Part No.	Description
7-5202	SL100, 75°, 20' (6.1m) Torch/Leads
7-5203	SL100, 75°, 50' (15.2m) Torch/Leads

**B**

**ATC™ Torch Connection**

**Torch and Leads**

SL60 Hand Torch w/ ATC™ (20-60 Amps)



Part No.	Description
7-5204	*SL60, 75°, 20' (6.1m) Torch/Leads
7-5205	*SL60, 75°, 50' (15.2m) Torch/Leads

**ATC™ Adapter Kit**

ATC Receptacle Adapter



Part No.	Description
7-5207	ATC™ Receptacle Connector

**ATC™ Lead Extensions**

Lead Extensions -Standard

Part No.	Description
7-7544	15' (4.5m) Lead Extension
7-7545	25' (7.6m) Lead Extension
7-7552	50' (15.2m) Lead Extension

**ATC™ Torch Connection**

**Torch and Leads**

SL100 Hand Torch w/ ATC (30-100 Amps)



Part No.	Description
7-5206	*SL100, 75°, 20' (6.1m) Torch/Leads
7-5208	*SL100, 75°, 50' (15.2m) Torch/Leads

**ATC™ Adapter Kit**

ATC™ Receptacle Adapter



Part No.	Description
7-5207	ATC™ Receptacle Connector

**ATC™ Lead Extensions**

Lead Extensions -Standard

Part No.	Description
7-7544	15' (4.5m) Lead Extension
7-7545	25' (7.6m) Lead Extension
7-7552	50' (15.2m) Lead Extension

**NOTE:** Total lead length including torch and extension(s), should not exceed the maximum length specified by the power supply manufacturer.

\* This receptacle adapter is required for each power supply using an ATC™ torch connection. This is connected to the torch adapter kit specific to each power supply.

**Thermal Dynamics® Cutskill®  
Replacement Consumables Available!**

- ESAB® / L-TEC®
- HYPERTHERM®
- INNERLOGIC®
- THERMAL DYNAMICS®
- KOMATSU®
- MILLER®
- WEIDEMANN®
- WHITNEY®
- LINCOLN®
- W.T.C®
- OTC®

## Adapter Kit Selection for Hand 1 Torch™ RPT Torch

Torch Adapter Kits-The model of the plasma cutting system must be known to determine the adapter kit required.

Manufacturer Power Supply Model	Part No.
<b>Airco®/Boc®</b>	
PCS-43	7-3425
PCS-53, PCS-80, PCS-90	7-3435
<b>Cebora®</b>	
Pocket 25	7-3476
<b>Century®</b>	
50	7-3438
82100	7-3430
82020*, 82050*, M2050*	7-3476
<b>Daihen®</b>	
SC-60P	7-3432
MRAT-70	7-3437
<b>Dayton®</b>	
3W722A*, 5Z031B*	7-3476
<b>ESAB® (yellow)</b>	
PCM-SMi, 500i, 625i, PCS-43	7-3425
PCS-53, 80, 90	7-3435
ESP-100i	7-3426
PCM-750i, 875, 1000i, 1125	7-3429
Sidewinder 30, 55, 105	7-3434
Powercut® 1250, 1500	7-3462
Powercut® 875/1125	7-3465
<b>Harris®</b>	
System 50, 65, 100	7-3439
<b>Hobart®</b>	
Smoothcut 30, 625	7-3425
Smoothcut 50 (single gas), 100	7-3426
Smoothcut 50 (dual gas)	7-3428
Smoothcut II 35A, 60A, 100A	7-3427
Fab Shop	7-3440
Cybercut 2050*	7-3457
<b>Hypertherm®</b>	
Max® 40, HT® 40 (H/F Start)	7-3430
Max® 70, Max® 80, Max® 100 w/ & w/o Q.D.	7-3430
Max® 42*, 43*, 40cs*	7-3454
powermax® 600*, 800*, 900* w/ Q.D.	7-3454
powermax® 1100*	7-3455
powermax® 1000*, 1250*	7-3461
Max® 40cs* (w/o Q.D.)	7-3476
powermax® 380*	7-3477
powermax® 600* w/o Q.D.	7-3480
powermax® 800*, 900* w/o Q.D.	7-3481
powermax® 1650	7-3483
powermax® 350	7-3484
powermax® 190C	7-3485
<b>Innerlogic®</b>	
SR-45i	7-3451
<b>L-TEC® (green)</b>	
PCM-31, SMi, 32i/34i, VPi	7-3425
PCM-500i, 625i, PCS-80i	7-3425
PCM-50A, 70, 80, 52i/54i, 82i/84i	7-3426
ESP-100i, PCM-50, PCM-100 (Single Gas)	
PCM-50, PCM-100 (Dual Gas)	
PCS-40	7-3430
PCM-750i, 1000i	7-3435
PCM-101	7-3436

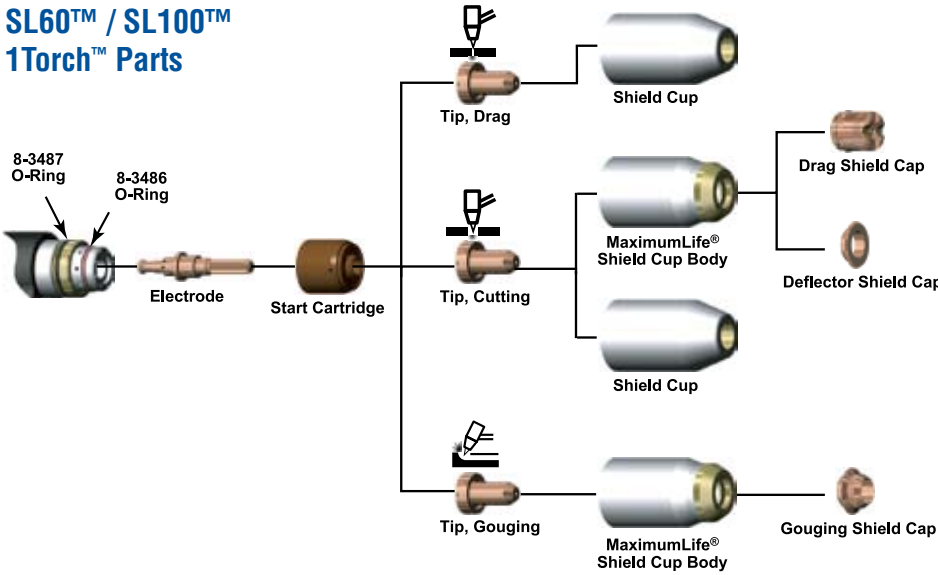
Manufacturer Power Supply Model	Part No.
<b>Lincoln®</b>	
Pro-Cut 40	7-3486
Pro-Cut 60	7-3431
<b>Marquette®</b>	
12/150, 12/200	7-3476
<b>Matco®</b>	
2020*, 2050*	7-3476
<b>Miller®</b>	
Plazcut 60†/Zipcut	7-3432
Spectrum® 250D, 500, 750	7-3433
Spectrum® 700, 1000, 1250, PLUS	7-3430
Spectrum® 3080*	7-3456
Spectrum® 650*, 701*, 2050*	7-3457
Spectrum® 300*	7-3476
Spectrum® 375*	7-3477
Spectrum® 625*	7-3478
*The Miller Spectrum 1000 with serial numbers beginning LF are not compatible with 1Torch RPT Torches.	
<b>Multiquip MQ®</b>	
PCX50SS	7-3437
<b>Nu-Tecsys®</b>	
Omnicut 375	7-3438
PCA-30/60, 65	7-3441
<b>OTC</b>	
Panasonic D-5000, D-7000	7-3437
<b>P-Tron®</b>	
P-Tron 75, 100	7-3437
<b>PowCon®</b>	
Starcut	7-3430
<b>Smith®</b>	
SPC-30, 20-50, 40-80	7-3442
PowerPro 55, 75	7-3487
<b>Snap-on®</b>	
YA-3440	7-3430
YA-2230*, YA-5550*, YA-5550A*	7-3476
<b>Solar®</b>	
SOL 2105	7-3430
SOL 2106	7-3430
SOL 2020* (118-009, 118-010),	7-3476
SOL 2050* (118-015, 118-016)	
<b>Thermal Dynamics®</b>	
PAK® 3XR, 5XT, 5XR, 6XR, 7XR, 625XR, 750XR	7-3446
PAK® 8XR, 10XR, 1000XR, 1250XR,	7-3434
PakMaster® 75, 100	7-3434
PakMaster® 50XL/XLP, 75XL/XLP, 100XL/XLP	7-3447
CUTMASTER™ 50, 75, 80XL, 100	7-3447
PakMaster® 25, 38XL, EconoPAK® 25	7-3443
Drag-Gun® 38, PAK® 4Xi, 6Xi	
PAK® 2XT, Dynapak® 110	
PakMaster® 50 w/ Smart Torch (Q.D.)	7-3445
EconoPAK® 50	7-3449
EconoPAK® 100	7-3450
PAK® 5	7-3444
PAK® 10	7-3436

\*Non-HF Systems. †The Miller PlazCut machines with Serial Numbers beginning JE are not compatible with 1Torch™ RPT Torches.

**NOTES:** Each Adapter Kit includes connection fitting, electrical connectors and installation instruction sheets for the selected power supply. CEBORA is a registered trademark of Cebora S.p.A.; DAIHEN is a registered trademark of Daihen Inc.; ESAB and L-TEC are registered trademarks of ESAB AB; HARRIS and LINCOLN are registered trademarks of Lincoln Electric Co.; HOBART is a registered trademark of Hobart Brothers Co.; HYPERTHERM, Max and powermax are registered trademarks of Hypertherm, Inc.; MILLER and Spectrum are registered trademarks of Miller Electric Mfg. Co.; MULTIQUIP is a registered trademark of Multiquip, Inc.; NU-TECSYS is a registered trademark of Nu-Tecsys, Inc.; P-TRON is a registered trademark of P-Tron Plasma/Tech Systems; SMITH is a registered trademark of Smith Equipment Co.; INNERLOGIC is a trademark of Innerlogic; Thermal Dynamics, PAK, CUTMASTER, PakMaster, EconoPAK, Dynapak and Drag-Gun are registered trademarks of Thermal Dynamics Corp.

# 1Torch™ Spare Parts List

## SL60™ / SL100™ 1Torch™ Parts



### 1Torch™ Consumables / Parts

Description	Part No.
O-Ring	8-3487
O-Ring	8-3486
Electrode, MaximumLife®	9-8215
Start Cartridge	9-8213
Tip, 20A, Drag	9-8205
Tip, 30A, Drag	9-8206
Tip, 40A, Drag	9-8207
Tip, 40A, Cutting	9-8208
Tip, 50/55A, Cutting	9-8209
Tip, 60A, Cutting	9-8210
Tip, 70A, Cutting	9-8231
Tip, 80A, Cutting	9-8211
Tip, 90/100A, Cutting	9-8212
Tip, A, Gouging	9-8225
Tip, B, Gouging	9-8226
Tip, C, Gouging	9-8227
Tip, D, Gouging	9-8228
Shield Cup	9-8218
Shield Cup Body, MaximumLife®	9-8237
Shield Cap, Drag, 40A	9-8244
Shield Cap, Drag, 50-60A	9-8235
Shield Cap, Drag, 70-100A	9-8236
Shield Cap, Mach, 40A	9-8245
Shield Cap, Mach, 50-60A	9-8238
Shield Cap, Mach, 70-100A	9-8239
Shield Cap, Deflector	9-8243
Shield Cap, Gouging	9-8241

Description	Part No.
Spare Parts Kit, 30 Amp	5-2550
Spare Parts Kit, 40 Amp	5-2551
Spare Parts Kit, 50/55 Amp	5-2552
Spare Parts Kit, 60 Amp	5-2553
Spare Parts Kit, 70 Amp	5-2554
Spare Parts Kit, 80 Amp	5-2555
Spare Parts Kit, 90/100 Amp	5-2556

**Note:** All Spare Parts Kits include ten (10) Tips, five (5) Electrodes and one (1) Start Cartridge  
Standard on SL100 RPT Torches, SL60 RPT Torches, and for all RPT Torches

## Accessories

**Single Stage Air Filter**  
Part No. 7-7507



**Remote Pendant**

- Control, 20 ft. (6.1m)
  - For use with Machine Torch
- Part No. 7-3460



**Leather Leads Cover**

- Part Nos:
- 9-1260 - 20 ft. (6.1m)
  - 9-1270 - 25 ft. (7.6m)
  - 9-1280 - 50 ft. (15.2m)



**Straight Line Cutting Guide**  
Part No. 7-8911



## Cutting Guide Kits

**Circle Guild Kit**  
Part No. 7-3291



**Roller/Radius Kit**  
Part No. 7-7501



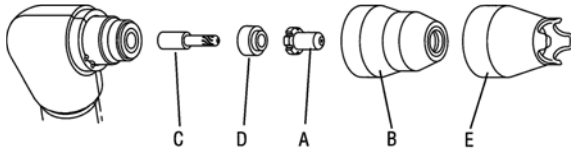
**Deluxe Kit**  
Part No. 7-8910



Plasma and Accessories



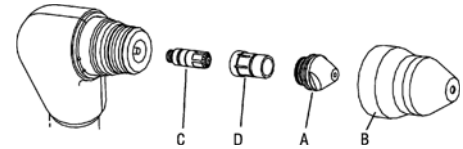
**KEY - 1**



Torch	Key - 1	Item	Part No.
PCH 20	A	Tip-20 Amp Air	8-3218
	B	Shield Cup	8-3214
	C	Electrode-Air	9-6006
	D	Gas Distributor	8-3233
PCH 25	A	Tip-20 Amp Air	9-4476
	B	Shield Cup	9-6003
	C	Electrode-Air	9-6006
	D	Gas Distributor	9-6007
PCH/M 35 *Long life parts cannot be used mixed with standard parts.	A	Tip-35 Amp Air	9-6000
	A	Tip-Drag Cut Air	9-6001
	A	Tip-Heavy Duty	9-6120
	A	Tip-Gouging-Groove Air	9-6002
	A*	Tip-Stand Off (long life)	9-6500
	A*	Tip-Drag (long life)	9-6501
	B	Shield Cup	9-6003
	B*	Shield Cup (long life)	9-6503
	C	Electrode Air	9-6006
	C*	Electrode (long life)	9-6506
	D	Gas Distributor	9-6007
	D*	Gas Distributor (long life)	9-6507
	E	Shield Cup-Crown	9-6004
	PCH/M 70	A	Tip-35 Amp Air/O <sub>2</sub> /N <sub>2</sub>
A		Tip-70 Amp Air/O <sub>2</sub> /N <sub>2</sub>	9-6009
A		Tip-70 Amp ArH <sub>2</sub>	9-6013
A		Tip-Gouging (.089)	9-6014
A		Tip-Gouging (.110)	9-6015
A		Tip-Gouging (.125)	9-6019
B		Shield Cup (Tip Exposed)	9-6016
B		Shield Cup-Crown	9-6017
B		Shield Cup-Gouging	9-6018
B		Shield Cup-Long	9-6024
C		Electrode-Air/O <sub>2</sub> /N <sub>2</sub>	9-6019
C		Electrode-ArH <sub>2</sub>	9-6021
C		Electrode-Gouging Air/N <sub>2</sub>	9-6107
C		Electrode-Gouging Ar/H <sub>2</sub>	9-6108
D		Gas Distributor	9-6022
N/S		Tip-Wrench	8-4053
N/S		Electrode-Wrench	9-5620

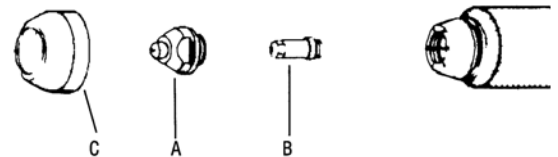
N/S= Not Shown

**KEY - 2**



Torch	Key - 2	Item	Part No.
PCH/M 140	A	Tip-35 Amp Air/N <sub>2</sub>	9-6025
	A	Tip-70 Amp Air/N <sub>2</sub>	9-6026
	A	Tip-105 Amp Air/N <sub>2</sub>	9-6027
	A	Tip-140 Amp Air/N <sub>2</sub>	9-6028
	A	Tip-Gouging (1 Ring) (.110)	9-6037
	A	Tip-Gouging (2 Ring) (.125)	9-6038
	A	Tip-Gouging (3 Ring) (.156)	9-6039
	A	Tip-Gouging (4 Ring) (.171)	9-6040
	B	Shield Cup	9-6045
	B	Shield Cup-Crown	9-6046
	B	Shield Cup-Gouging	9-6047
	B	Shield Cup-Long Air/N <sub>2</sub>	9-6054
	C	Electrode-Air/N <sub>2</sub>	9-6048
	C	Electrode-Gouging Air/N <sub>2</sub>	9-6110
	D	Gas Distributor	9-6051
	D	Gas Distributor-Gouging	9-6112
	N/S	Cooling Tube	9-6052
	N/S	Cooling Tip-Gouging	9-6113

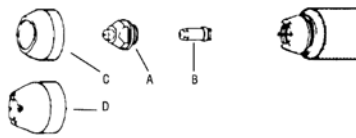
**KEY - 3**



Torch	Key - 3	Item	Part No.
PCH/M 150	A	Tip-150 Amp Air	9-5746
	A	Tip-100 Amp Air	9-5747
	A	Tip-50 Amp Air	9-5748
	A	Tip-150 Amp Oxygen	9-5751
	A	Tip-100 Amp Oxygen	9-5752
	A	Tip-50 Amp Oxygen	9-5753
	A	Tip-150 Amp N <sub>2</sub>	9-5767
	A	Tip-100 Amp N <sub>2</sub>	9-5766
	A	Tip-50 Amp N <sub>2</sub>	9-5765
	A	Tip-150 Amp ArH <sub>2</sub>	9-5775
	A	Tip-Gouging (.120)	9-5755
	A	Tip-Gouging (.078)	9-5756
	B	Electrode-Air	9-5749
	B	Electrode-Oxygen	9-5760
	B	Electrode-N <sub>2</sub> or ArH <sub>2</sub>	9-5754
	C	Cup-Std. Ceramic front	9-5750
	C	Cup-Tip Exp. Ceramic	9-5758
	C	Cup-Standard Copper	9-5790
	C	Cup-Tip Exp. Copper	9-5801

**Replacement Consumables**

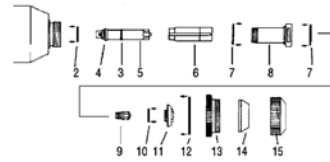
**KEY - 4**



Torch	Key - 4	Item	Part No.
PCH/M 51	A	Tip-10-40 Amp Air	9-5718
	A	Tip-10-60 Amp Air	9-5631
	A	Tip-65 Amp Air	8-3321
	A	Tip-Gouging	9-5724
	B	Electrode-Air (Knurl)	9-5720
	B	Electrode-Air	9-5633
	C**	Cup-Ceramic	9-5630
	C*	Std-metal (8-2159)	9-5800
	C**	Cup-Hi Strength	8-2152
	C	Cup-Hi Strength long	8-2151
	C**	Cup-Black phenolic	8-2159
	D*	Crown-Metal (8-2159)	9-5779
	D	Cup-Ceramic crown	8-5526
PCH/M 52	A	Tip-35 Amp Air	9-5702
	A	Tip-45-55 Amp Air	9-5618
	A	Tip-60-70 Amp Air	9-5707
	A	Tip-80 Amp Air	9-5782
	A	Tip-105 Amp Air	9-5708
	A	Tip Gouging	8-5129
	B	Electrode-Air (plated)	9-5619
	B	Electrode-Air (unplated)	8-3331
	B	Electrode (Multi-Gas)	9-5711
	C	Cup-Ceramic	9-5617
	C	Cup-Ceramic Crown	9-5694
	C	Cup-Phenolic Std.	9-5781
	C	Cup-Ceramic Gouge	8-5128
	C	Cup-Hi Strength short	9-5712
	D*	Crown-Metal (9-5781)	9-5780
	D*	Standard-Metal (9-5781)	9-5799

\* Requires part in parentheses for use  
\*\* Recommended for gouging

**KEY - 6**

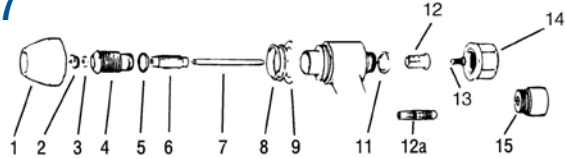


Torch	Key - 6	Item	Part No.
PCH/M-6B	2	O-Ring	8-0531
	3	O-Ring	8-2960
	4	O-Ring	8-0527
	5	Electrode holder (includes items 3 & 4)	8-6615
	6	Gas Distributor	8-6569
	7	O-Ring	9-2956
	8	Liner (includes 2 & 7)	8-6571
	9	Electrode (General purpose)	8-6578
	9	Electrode (Low amp)	8-6586
	10	O-Ring	9-2863
	11*	Tip-100 Amp	8-6580
	11*	Tip-200 Amp	8-6575
	11*	Tip-300 Amp	8-6582
	11*	Tip-400 Amp	8-6572
	12	Gasket	8-6512
	13	Outer Insulator	8-6581
	14	End Piece	8-6514
	15	End Cap	8-6515
N/S	Electrode Holder Wrench	8-6574	
N/S	Electrode Wrench	8-6573	
N/S	Liner/Tip Wrench	8-6517	

\*All tips include items 10 & 7

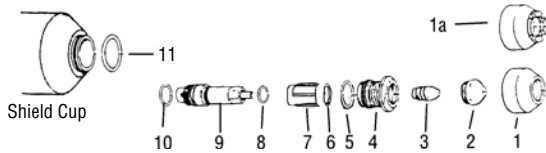
N/S = Not Shown

**KEY - 7**



Torch	Key - 7	Item	Part No.
PCH/M-4B, 4BT	1	Shield Cup (hand torch)	8-4088
	2	Tip-100 Amp	8-4153
	3	Gas Distributor	9-2421
	4	Liner	8-4154
	5	O-Ring (included with Item 4)	9-2960
	6	Sleeve	8-4182
	7	Electrode	8-4073
	8	O-Ring (included with Item 1)	8-0554
	9	Gasket	8-4069
	11	O-Ring for PCH 4B	8-0530
	11	O-Ring for PCM 4B	8-0532
	12	Collet (w/ 8-0525) -4B only	8-4156
	12a	Collet (w/ 8-0525) -4BT only	8-4197
	13	Spring	8-4050
	14	Back Cap: PCH-4B	8-4158
15	Back Cap: PCM-4B	8-4159	

**KEY - 5**



Torch	Key - 5	Item	Part No.
PCH 100	1	Shield Cup (hand torch)	8-1100
	1a	Crown Shield Cup	8-1113
	2	Tip-105 Amp	9-4341
	2	Tip-70 Amp	9-4342
	2	Tip-35 Amp	9-4343
	3	Electrode	9-4340
	4	Liner	8-1106
	5	O-Ring (included with Item 4)	8-1135
	6	O-Ring (included with Item 7)	8-1134
	7	Gas Distributor	9-4339
	8	O-Ring (included with Item 9)	8-1133
9	Electrode Holder	8-1108	
10	O-Ring (included with Item 9)	8-1152	
11	O-Ring (on shield cup)	8-0556	