

General MIG Gun Information / FABGUN™ Air-Cooled MIG Gun

Tweco® offers a full line of MIG guns for a variety of welding applications; ranging in amperages from 160 to 600 for semi-automatic and fully automatic applications. Tweco® guns handle wire sizes from .023 to 5/64" in the lower-to-mid range and .035 to 1/8" in the mid-to-higher range. All guns are rated for welding applications with CO₂; amperages may be reduced with mixed gases. There are many variables that will determine actual mixed gas rating.

Available in 10 ft. (3.05m), 12 ft. (3.66m) and 15 ft. (4.60m), Tweco® MIG guns are equipped with 60° conductor tubes as standard.

Tweco® "quality" MIG guns set the standards for which you have come to expect:

- All Tweco® MIG Guns are equipped with genuine Tweco® consumables with threaded connections and are fully assembled, factory tested and ready to hook-up and run.
- Wire Conduits offer a maximum welding columnar strength, thus reducing to a minimum the wave in the wire, producing smooth feeding and eliminating stubbing action at the arc.
- Tweco® Cablehoz® Assemblies are highly flexible with copper conductor strands, control wires and gas hose combined into one coaxial unit which is strong, lightweight and easy to handle.
- The fully insulated Tweco® MIG-Kwik Connection allows quick connect/disconnect at the wire feeder. Only seconds are required to plug in or unplug into the unit. This eliminates down time as easy replacements can be made in seconds.
- Rear plug connections are designed for compatibility with Lincoln®, Miller® and European wire feed connections and to many other wire feeders used worldwide.
- Tweco® is ISO 9001 certified and manufactures its products to the strict quality standards set for ISO registered companies.



Tweco® Spraymaster™ Air Cooled MIG Gun in use.

FABGUN™ 250 AMP Air-Cooled MIG Gun

- 60% duty cycle, CO₂ gas.
- Simple, reliable gun construction with fewer parts to simplify maintenance.
- Easy gun selection with only three MIG gun models for use on many major manufacturers' welding systems.
- A convenient color-coded selection guide that makes it easy to match the right FABGUN™ model to the power supply system they're using.
- Lightweight, ergonomic handle for more comfort and reduced fatigue.
- Standard Tweco® consumables readily available.
- Genuine Tweco® quality and reliability at an attractive, highly competitive price.



250 AMP Rear Connection Style

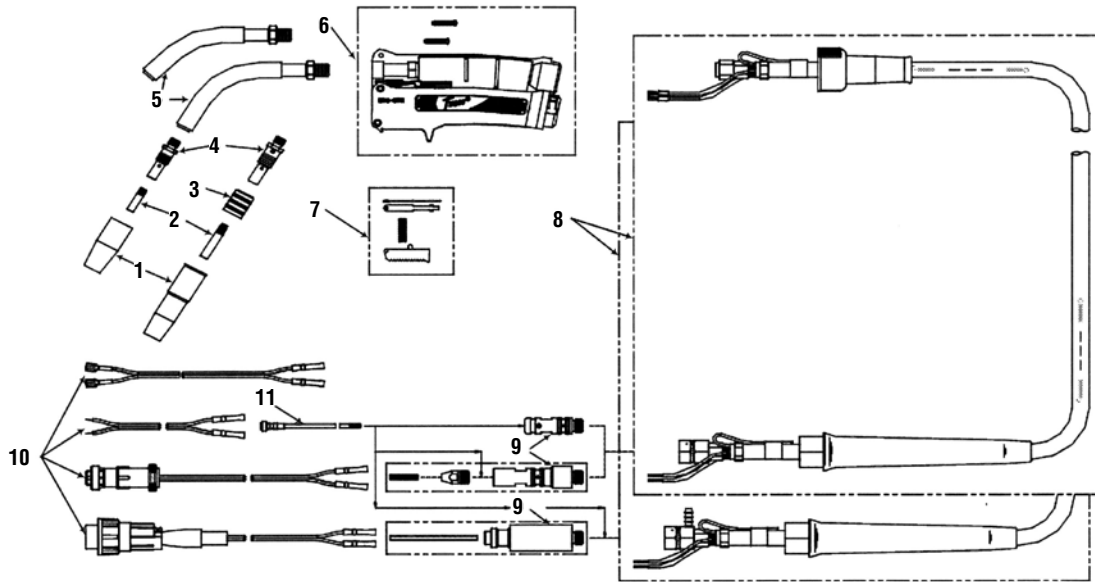
Wire Size	Cable Length	Tweco®	Miller®	Lincoln®	Euro-Kwik®
.045	12'	FAB250T-12	FAB250M-12	FAB250L-12	
1.2 mm	4 m	1020-1550	1020-1551	1020-1552	

* May require adaptor plug for some feeders

Specific Welding System Compatibility

Miller® Electric		Thermal Arc / ESAB® / Lincoln®	
FAB250M-12	1020-1551	FAB250T-12	1020-1550
Millermatic 135		THERMAL ARC	
Millermatic 175		Fabricator 210	
Millermatic 210		Fabricator 250	
Millermatic Pulser		ESAB®	
Millermatic Vintage		Multimaster260	
Millermatic 251		LINCOLN®	
Millermatic 300		SP150	
Cricket		SP100	
Millermatic 90		SP130	
Millermatic 120		Weldpac 150	
Millermatic 130		SP135T	
Millermatic 150		SP135 Plus	
Millermatic 200		SP175	
Millermatic 35 (1980 & newer)		SP175 Plus	
Millermatic 250		Power Mig 200	
Millermatic 185		Power Mig 255	
Porta-Mig		Wirematic 250	
		Wirematic 255 (except digital)	

Lincoln®	
FAB250L-12	1020-1552
SP200	



Consumables

(1) Nozzles					(3) Insulator	(5) Conductor Tubes	
Bore Size	3/8" / 9.5 mm	3/8" / 9.5 mm	1/2" / 12.7 mm	5/8" / 15.9 mm		60°	45°
21 Series Flush	21T-37 1210-1300	21-37 1210-1110	21-50 1210-1110	21-62 1210-1120	32 1320-1100	FAB62-60 1620-1320	FAB62-45 1620-1321
	21T-37F 1210-1302	21-37F 1210-1102	21-50F 1210-1112	21-62F 1210-1122			
22 Series Short Stop			22-50 1220-1110	22-62 1220-1120			
	22T-37-SS 1220-1301	22-37-SS 1220-1101	22-50-SS 1220-1111	22-62-SS 1220-1121			

(2) Contact Tips							(4) Diffuser
Wire Size	.023" / 0.6 mm	.030" / 0.8 mm	.035" / 0.9 mm	.040" / 1.0 mm	.045" / 1.2 mm	3/64" AL / 1.2 mm	
Tip I.D.	.031" / 0.79 mm	.038" / 0.97 mm	.044" / 1.12 mm	.048" / 1.22 mm	.054" / 1.37 mm	.059" / 1.50 mm	
11 Series Heavy Duty Tapered	11-23 1110-1100	11-30 1110-1101	11-35 1110-1102	11-40 1110-1103	11-45 1110-1104		35-50 1500-1100
		11H-30 1110-1201	11H-35 1110-1202	11H-40 110-1203	11H-45 110-1204	11AH-364 1110-1213	For Aluminum 35-50A 1500-1101
	11T-23 1110-1300	11T-30 1110-1301	11T-35 1110-1302	11T-40 1110-1303	11T-45 1110-1304		
14 Series Heavy Duty Tapered	14-23 1140-1100	14-30 1140-1101	14-35 1140-1102	14-40 1140-1103	14-45 1140-1104	14A-364 1140-1113	FAB52 1520-1120
			14H-35 1140-1202	14H-40 1140-1203	14H-45 1140-1204	14AH-364 1140-1213	
	14T-23 1140-1300	14T-30 1140-1301	14T-35 1140-1302	14T-40 1140-1303	14T-45 1140-1304		

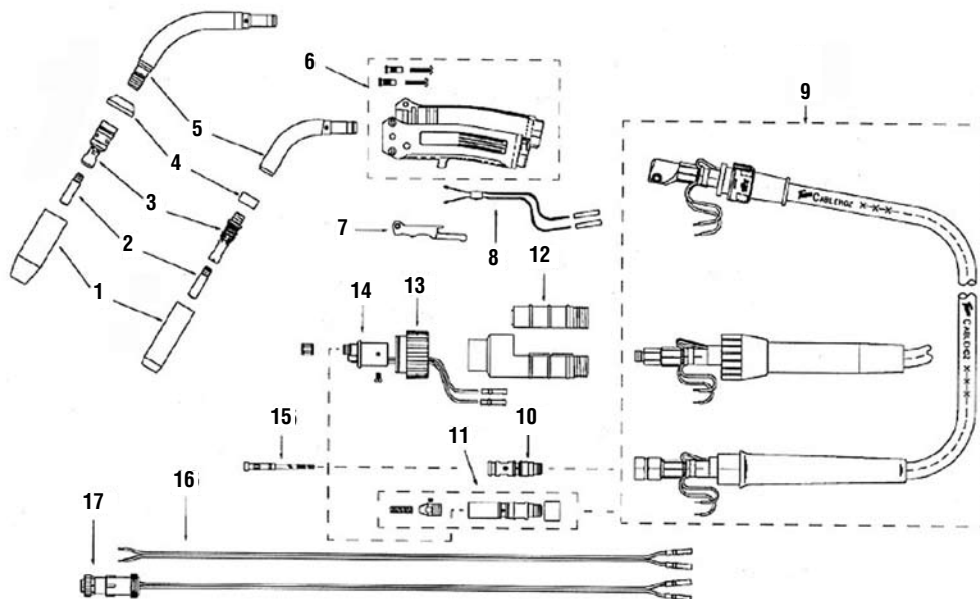
Other Parts

No.	Description	Part No.	Model No.
6	Handle assembly & screws	FAB82	2020-2200
7	Switch assembly	FAB92	2020-2205
8	Replacement cable	FAB250C12	1720-2150
8	Replacement cable (Lincoln® plug)	FAB250C12L	1720-2151
9	Tweco® wire guide plug	35K-174C	2000-2169
9	Miller® wire guide plug	170M	2000-2810
9	Lincoln® wire guide	TLAK352	2641-2030

No.	Description	Part No.	Model No.
10	Thermal Arc control wire	MS354-IT	2060-2136
10	Generic control wire	35K-350-1	2000-2352
10	Miller® control wire	WM354-M	2030-2075
10	Lincoln® control wire	35SP-354	2000-2354
11	Conduit for .023" (0.6 mm) wire	23-40-15	1400-1123
11	Conduit for .035" (0.9 mm) wire	35-40-15	1400-1133
11	Conduit for .045" (1.2 mm) wire	45-40-15	1400-1143

Spraymaster™ Air Cooled MIG Gun

Spray Master™ Air-Cooled MIG Gun



No.	250 AMP	350 AMP	450 AMP	Description
1	Nozzles (not shown)			
2	Contact Tips (not shown)			
3	HD52-11 1520-1130	EL52CT-16 1560-1107	HD54-16 1540-1136	Diffuser (standard)
3A	HD52-23-11 1520-1131			Diffuser (optional) .023 / 0.6 mm wire
4	63J-3 1630-1121	63J-3 1630-1121	66J-3 1660-1836	Insulator assembly ELC250 & ELC350
5	MS63-60S 1630-1196	MS63-60S 1630-1196	MS64H-60 1640-1319	Conductor tube
5	MS63-45S 1630-1195	MS63-45S 1630-1195	MS64H-45 1640-1318	Conductor tube (Standard on 25 guns only)
6	MS84 2060-2130	MS84 2060-2130	MS84 2060-2130	Handle w/screws
6A	152 2020-2152	152 2020-2152	152 2020-2152	Gun hanger (not shown)
7	ELC94 2060-2647	ELC94 2060-2647	ELC94 2060-2647	Trigger
7A	ELC96L 2060-2654	ELC96L 2060-2654	ELC96L 2060-2654	Locking trigger (not shown)
7B	DS96TB 2060-2654	DS96TB 2060-2654	DS96TB 2060-2654	Dual schedule trigger assembly (not shown)
8	ELC96B 2060-2606	ELC96B 2060-2606	ELC96B 2060-2606	Trigger blade assembly
9	MS210 1720-2115	MS310 1730-2035	MS410 1740-2115	Cablehoz assembly 10 / 3 m
9	MS212 1720-2116	MS312 1730-2036	MS412 1740-2116	Cablehoz assembly 12 / 3 m
9	MS215 1720-2117	MS315 1730-2037	MS415 1740-2117	Cablehoz assembly 15 / 3 m

No.	250 AMP	350 AMP	450 AMP	Description
9	MS225 1720-2118	MS325 1730-2038	MS425 1740-2118	Cablehoz assembly 25 / 3 m
9A	MS210X 1720-2106	MS310X 1730-2010	MS410X 1740-2121	Cablehoz assembly Euro-Kwik® 10 / 3 m
9A	MS212X 1720-2107	MS312X 1730-2011	MS412X 1740-2122	Cablehoz assembly, Euro-Kwik® 12 / 3 m
9A	MS215X 1720-2108	MS315X 1730-2012	MS415X 1740-2123	Cablehoz assembly, Euro-Kwik® 15 / 3 m
9A	MS225X 1720-2109	MS325X 1730-2013	MS425X 1740-2124	Cablehoz assembly, Euro-Kwik® 25 / 3 m
10	350-174H 2035-2110	350-174H 2035-2110	350-174H 2035-2110	Tweco® connector plug
11	350-174MH 2035-2111	350-174MH 2035-2111	350-174MH 2035-2111	Miller® connector plug
12	X6RC 2060-2006	X6RC 2060-2006	X6RC 2060-2006	Euro-Kwik® connector case
13	174X-2 2040-2177	174X-2 2040-2177	174X-2 2040-2177	Euro-Kwik® nut
14	174EX-1 2040-2276	174EX-1 2040-2276	174EX-1 2040-2276	Euro-Kwik® connection assembly
15	Not Shown			Conduit
16	35K-350-1 2000-2352	35K-350-1 2000-2352	35K-350-1 2000-2352	Tweco® control wire
17	WM-354M 2030-2075	WM-354M 2030-2075	WM-354M 2030-2075	Tweco® control wire & plug
Not Shown	194DS 2040-2195	194DS 2040-2195	194DS 2040-2195	Dual schedule control wire & plug

Spraymaster™ Air Cooled MIG Gun

250 AMP Gun Assemblies



Part No.	Model No.	Description
With Tweco® Rear Connections		
MS210-3545	1023-1100	.035 - .045" 0.9-1.2 mm 10' / 3 m cable
MS212-3545	1023-1101	.035 - .045" 0.9-1.2 mm 12' / 4 m cable
MS215-3545	1023-1102	.035 - .045" 0.9-1.2 mm 15' / 5 m cable
MS225-3545	1023-1108	.035 - .045" 0.9-1.2 mm 25' / 8 m cable
With Miller® Rear Connections		
MS210M-3545	1023-1110	.035" - .045" 0.9-1.2 mm 10' / 3 m cable
MS212M-3545	1023-1111	.035" - .045" 0.9-1.2 mm 12' / 4 m cable
MS215M-3545	1023-1112	.035" - .045" 0.9-1.2 mm 15' / 5 m cable
MS225M-3545	1023-1118	.035" - .045" 0.9-1.2 mm 25' / 8 m cable
With Euro-Kwik® Rear Connections		
MS210X-3545	1023-1125	.035" - .045" 0.9-1.2 mm 10' / 3 m cable
MS212X-3545	1023-1126	.035" - .045" 0.9-1.2 mm 12' / 4 m cable
MS215X-3545	1023-1127	.035" - .045" 0.9-1.2 mm 15' / 5 m cable
MS225X-3545	1023-1133	.035" - .045" 0.9-1.2 mm 25' / 8 m cable

350 AMP Gun Assemblies

Description	Part No.	Model No.	Part No.	Model No.
With Tweco® Rear Connections				
.045" - 1/16" 1.2-1.6 mm 10' / 3 m cable	MS310-116	1036-1610	MS410-116	1040-1050
.045" - 1/16" 1.2-1.6 mm 12' / 4 m cable	MS312-116	1036-1613	MS412-116	1040-1051
.045" - 1/16" 1.2-1.6 mm 15' / 5 m cable	MS315-116	1036-1615	MS415-116	1040-1052
.045" - 1/16" 1.2-1.6 mm 25' / 8 m cable	MS325-116	1036-1616	MS425-116	1040-1058
.045" - 1/16" 1.2-1.6 mm 15' / 5 m cable*	MS315-116LC	1036-1627	MS415-116LC	1040-1090
.045" - 1/16" 1.2-1.6 mm 15' / 5 m cable**	MS315-116DS	1036-1631	MS415-116DS	1040-1095
With Miller® Rear Connections				
.045" - 1/16" 1.2-1.6 mm 10' / 3 m cable	MS310M-116	1036-1635	MS410M-116	1040-1060
.045" - 1/16" 1.2-1.6 mm 12' / 4 m cable	MS312M-116	1036-1638	MS412M-116	1040-1061
.045" - 1/16" 1.2-1.6 mm 15' / 5 m cable	MS315M-116	1036-1640	MS415M-116	1040-1062
.045" - 1/16" 1.2-1.6 mm 25' / 8 m cable	MS325M-116	1036-1642	MS425M-116	1040-1068
.045" - 1/16" 1.2-1.6 mm 15' / 5 m cable*	MS315-116LC	1036-1629	MS415-116LC	1040-1092
.045" - 1/16" 1.2-1.6 mm 15' / 5 m cable**	MS315-116DS	1036-1633		
With Euro-Kwik® Rear Connections				
.045" - 1/16" 1.2-1.6 mm 10' / 3 m cable	MS310X-116	1036-1618	MS410X-116	1040-1075
.045" - 1/16" 1.2-1.6 mm 12' / 4 m cable	MS312X-116	1036-1621	MS412X-116	1040-1076
.045" - 1/16" 1.2-1.6 mm 15' / 5 m cable	MS315X-116	1036-1623	MS415X-116	1040-1077
.045" - 1/16" 1.2-1.6 mm 25' / 8 m cable	MS325X-116	1036-1620	MS425X-116	1040-1083
.045" - 1/16" 1.2-1.6 mm 15' / 5 m cable*	MS315X-116LC	1036-1628	MS415X-116LC	1040-1091

* w/locking trigger

** w/ dual schedule trigger

Spraymaster™ Consumables

Nozzles



350 AMP Guns

Fits Diffuser EL52CT-16 (1560-1107)

Nozzle Style	3/8" 9.5 mm bore	1/2" 12.7 mm bore	5/8" 15.9 mm bore	3/4" 19.1 mm bore
Standard CT type (1/8" tip recess)	EL-22CT-37 1260-1625	EL22CT-50 1260-1626	EL22CT-62 1260-1627	EL22CT-75 1260-1628
Optional CT type (tip flush)		EL22CT-50F 1260-1636	EL22CT-62F 1260-1637	
Optional CT type (tip protruded)		EL22CT-50P 1260-1691	EL22CT-62P 1260-1692	EL22CT-75P 1260-1693
Optional CT type (heavy duty)			EL22CT-62H 1260-1629	
Optional ARC spot nozzles (flat arc spot)			EL221-62FAS 1260-1605	

* 350 AMP guns ship w/ standard 5/8" / 15.9 mm bore nozzle EL22CT-62

250 AMP Guns

Fits Diffuser HD52-11 (1520-1130)

Nozzle Style	3/8" 9.5 mm bore	1/2" 12.7 mm bore	5/8" 15.9 mm bore
Standard slip-on type (1/8" tip recess)	HD22-37 1220-1305	HD22-50 1220-1306	HD22-62 1220-1307
Optional slip-on type (tip flush)	HD22-37F 1220-1310	HD22-50F 1220-1311	HD22-62F 1220-1312

* 250 AMP guns ship w/ standard 1/2 / 12.7 mm bore nozzle HD22-50

450 AMP Guns

Fits Diffuser HD54-16 (1540-1136)

Nozzle Style	1/2" 12.7 mm bore	5/8" 15.9 mm bore	3/4" 19.1 mm bore
Standard slip-on type (1/8" tip recess)	HD24L-50 1240-1200	HD24L-62 1240-1201	HD24L-75 1240-1202
Optional slip-on type (tip flush)	HD24L-50F 1240-1204	HD24L-62F 1240-1205	HD24L-75F 1240-1206
Optional slip-on type (1/8" tip recess) heavy duty	HD24-50 1240-1240	HD24-62 1240-1241	HD24-75 1240-1242
Optional slip-on type (tip flush) heavy duty	HD24-50F 1240-1235	HD24-62F 1240-1236	HD24-75F 1240-1237

Contact Tips

Wire Size In. / Metric	Tip I.D. In. / Metric	250 AMP	350 & 450 AMP
.023" 0.6 mm	.031" 0.79 mm	11-23 1110-1100	
.030" 0.8 mm	.038" 0.97 mm	11H-30 1110-1201	
.035" 0.9 mm	.044" 1.12 mm	11H-35 1110-1202	16S-35 1160-1102
.040" 1.0 mm	.048" 1.22 mm	11H-40 1110-1203	16S-40 1160-1103
.045" 1.2 mm	.054" 1.37 mm	11H-45 1110-1204	16S-45 1160-1104
.052" 1.3 mm	.064" 1.65 mm		16S-52 1160-1105
1/16" 1.6 mm	.073" 1.85 mm		16S-116 1160-1106
5/64" 2.0 mm	.090" 2.29 mm		16S-564 1160-1109
3/64" AL 1.2 mm	.059" 1.50 mm	11AH-364 1110-1213	16AS-364 1160-1113
1/16" AL 1.6 mm	.082" 2.08 mm		16AS-116 1160-1114

Conduit

Wire Size In. / Metric	250 AMP	Wire Size In. / Metric	350 & 450 AMP
For Use With Steel Wire			
.023" 0.6 mm	42-23-15 1420-1103	.035" / .045" 0.9 / 1.2 mm	44-3545-15 1440-1103
.030" / .035" 0.8 / 0.9 mm	42-3035-15 1420-1113	.052" / 1/16" 1.3 / 1.6 mm	44-116-15 1440-1113
.040" / .045" 1.0 / 1.2 mm	42-4045-15 1420-1123	5/64" 2.0 mm	44-564-15 1440-1123
For Use With Aluminum Wire			
.035" / 3/64" 0.9 / 1.2 mm	42N-3545-15 1420-1003	.030" / 3/64" 0.8" / 1.2 mm	44N-3545-15 1440-1003

Mini MIG & No. 1 Gun Assemblies

Mini MIG Gun Assemblies with 'Standard' Consumables

160 AMP Air Cooled



Mini Mig Gun

Description	Part No.	Model No.	Part No.	Model No.
	w/ Tweco® Rear Connection (Requires Adapter Plug)		w/ Euro-Kwik® Rear Connection	
.023" / 0.6 10' / 3 m cable	23-10	1000-1121		
.035" / 0.9 10' / 3 m cable	35-10	1000-1131	X35-10	1000-1631
.035" / 0.9 12' / 4 m cable	35-12	1000-1132	X35-12	1000-1632
.035" / 0.9 15' / 5 m cable	35-15	1000-1133	X35-15	1000-1633
.045" / 1.2 10' / 3 m cable	45-10	1000-1141		
.045" / 1.2 12' / 4 m cable	45-12	1000-1142		
.045" / 1.2 15' / 5 m cable	45-15	1000-1143		
	w/ Miller® Connection		w/ Lincoln® Rear Connection	
.023" / 0.6 10' / 3 m cable	M23-10	1000-1210		
.035" / 0.9 10' / 3 m cable	M35-10	1000-1211	L35-10	1000-1231
.035" / 0.9 12' / 4 m cable	M35-12	1000-1213		
.035" / 0.9 15' / 5 m cable	M35-15	1000-1215	L35-15	1000-1233
.045" / 1.2 10' / 3 m cable	M45-10	1000-1212		
.045" / 1.2 12' / 4 m cable	M45-12	1000-1214		
.045" / 1.2 15' / 5 m cable	M45-15	1000-1216		

No.1 MIG Gun Assemblies with 'Standard' Consumables

160 AMP Air Cooled



No. 1

Description	Part No.	Model No.	Part No.	Model No.
	w/ Tweco® Rear Connection (Requires Adapter Plug)		w/ Euro-Kwik® Rear Connection	
.023" / 0.6 10' / 3 m cable	110-23	1010-1101		
.035" / 0.9 10' / 3 m cable	110-3035	1010- 1111		
.035" / 0.9 12' / 4 m cable	112-3035	1010- 1112		
.035" / 0.9 15' / 5 m cable	115-3035	1010- 1113		
.045" / 1.2 10' / 3 m cable	110-4045	1010- 1121	X110-4045	1010-1621
.045" / 1.2 12' / 4 m cable	112-4045	1010- 1122	X112-4045	1010-1622
.045" / 1.2 15' / 5 m cable	115-4045	1010- 1123	X115-4045	1010-1623
	w/ Miller® Connection		w/ Lincoln® Rear Connection	
.023" / 0.6 10' / 3 m cable	M110-23	1010-1130		
.035" / 0.9 10' / 3 m cable	M110-3035	1010-1131		
.035" / 0.9 12' / 4 m cable	M112-3035	1010-1133		
.035" / 0.9 15' / 5 m cable	M115-3035	1010-1135	L115-3035	1010-1145
.045" / 1.2 10' / 3 m cable	M110-4045	1010-1132		
.045" / 1.2 12' / 4 m cable	M112-4045	1010-1134		
.045" / 1.2 15' / 5 m cable	M115-4045	1010-1136		

No. 2 & No. 3 MIG Gun Assemblies

No.2 MIG Gun Assemblies with 'Standard' Consumables

200 AMP Air Cooled

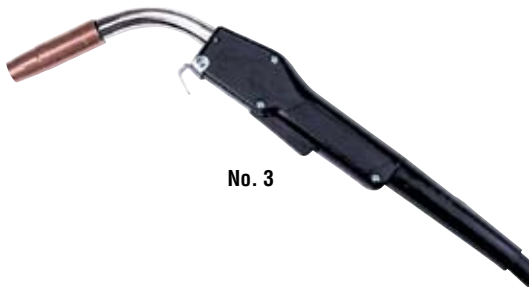


No. 2

Description	Part No.	Model No.	Part No.	Model No.
	w/ Tweco® Rear Connection (Requires Adapter Plug)		w/ Euro-Kwik® Rear Connection	
.035" / 0.9 10' / 3 m cable	210-3035	1020-1111	X210-3035	1020-1611
.035" / 0.9 12' / 4 m cable	212-3035	1020-1112	X212-3035	1020-1612
.035" / 0.9 15' / 5 m cable	215-3035	1020-1113	X215-3035	1020-1613
.045" / 1.2 10' / 3 m cable	210-4045	1020-1121	X210-4045	1020-1621
.045" / 1.2 12' / 4 m cable	212-4045	1020-1122	X212-4045	1020-1622
.045" / 1.2 15' / 5 m cable	215-4045	1020-1123	X215-4045	1020-1623
	w/ Miller® Connection		w/ Lincoln® Rear Connection	
.035" / 0.9 10' / 3 m cable	M210-3035	1020-1130	L210-3035	1020-1140
.035" / 0.9 12' / 4 m cable	M212-3035	1020-1132	L212-3035	1020-1142
.035" / 0.9 15' / 5 m cable	M215-3035	1020-1134	L215-3035	1020-1144
.045" / 1.2 10' / 3 m cable	M210-4045	1020-1131	L210-4045	1020-1141
.045" / 1.2 12' / 4 m cable	M212-4045	1020-1133	L212-4045	1020-1143
.045" / 1.2 15' / 5 m cable	M215-4045	1020-1135	L215-4045	1020-1145

No.3 MIG Gun Assemblies with 'Standard' Consumables

300 AMP Air Cooled



No. 3

Description	Part No.	Model No.	Part No.	Model No.
	w/ Tweco® Rear Connection (Requires Adapter Plug)		w/ Euro-Kwik® Rear Connection	
.045" / 1.2 10' / 3 m cable	310-3545	1030-1101	X310-3545	1030-1601
.045" / 1.2 12' / 4 m cable	312-3545	1030-1102	X312-3545	1030-1602
.045" / 1.2 15' / 5 m cable	315-3545	1030-1103	X315-3545	1030-1603
1/16" / 1.6 10' / 3 m cable	310-116	1030-1111		
1/16" / 1.6 12' / 4 m cable	312-116	1030-1112		
1/16" / 1.6 15' / 5 m cable	315-116	1030-1113	X315-116	1030-1613
	w/ Miller® Connection		w/ Lincoln® Rear Connection	
.045" / 1.2 10' / 3 m cable	M310-3645	1030-1130	L310-3545	1030-1140
.045" / 1.2 12' / 4 m cable	M312-3545	1030-1133	L312-3545	1030-1143
.045" / 1.2 15' / 5 m cable	M315-3545	1030-1136	L315-3545	1030-1146

No.4 & 5 MIG Gun Assemblies

No.4 MIG Gun Assemblies with 'Standard' Consumables

400 AMP Air Cooled



Description	Part No.		Model No.	
	w/ Tweco® Rear Connection (Requires Adapter Plug)		w/ Euro-Kwik® Rear Connection	
.045" / 1.2 10' / 3 m cable	410-3545	1040-1101	X410-3545	1040-1601
.045" / 1.2 12' / 4 m cable	412-3545	1040-1102	X412-3545	1040-1602
.045" / 1.2 15' / 5 m cable	412-3545	1040-1103	X415-3545	1040-1603
1/16" / 1.6 10' / 3 m cable	410-116	1040-1111		
1/16" / 1.6 12' / 4 m cable	412-116	1040-1112		
1/16" / 1.6 15' / 5 m cable	415-116	1040-1113	X415-116	1040-1613
5/64" / 2.0 10' / 3 m cable	410-564	1040-1121		
5/64" / 2.0 12' / 4 m cable	412-564	1040-1122		
5/64" / 2.0 15' / 5 m cable	415-564	1040-1123		
	w/ Miller® Connection		w/ Lincoln® Rear Connection	
.045" / 1.2 10' / 3 m cable	M410-3545	1040-1130	L410-3545	1040-1140
.045" / 1.2 12' / 4 m cable	M412-3545	1040-1133	L412-3545	1040-1143
.045" / 1.2 15' / 5 m cable	M415-3545	1040-1136	L415-3545	1040-1146
1/16" / 1.6 10' / 3 m cable	M410-116	1040-1131	L410-116	1040-1141
1/16" / 1.6 12' / 4 m cable	M412-116	1040-1134	L412-116	1040-1144
1/16" / 1.6 15' / 5 m cable	M415-116	1040-1137	L415-116	1040-1147
5/64" / 2.0 10' / 3 m cable	M410-564	1040-1132		
5/64" / 2.0 12' / 4 m cable	M412-564	1040-1135		
5/64" / 2.0 15' / 5 m cable	M415-564	1040-1138		

No.5 MIG Gun Assemblies with 'Standard' Consumables

500 AMP Air Cooled



Description	Part No.		Model No.	
	w/ Tweco® Rear Connection (Requires Adapter Plug)		w/ Euro-Kwik® Rear Connection	
.045" / 1.2 10' / 3 m cable	510-3545	1050-1101		
.045" / 1.2 12' / 4 m cable	512-3545	1050-1102		
.045" / 1.2 15' / 5 m cable	515-3545	1050-1103		
1/16" / 1.6 10' / 3 m cable	510-116	1050-1111		
1/16" / 1.6 12' / 4 m cable	512-116	1050-1112		
1/16" / 1.6 15' / 5 m cable	515-116	1050-1113	X515-116	1050-1613
3/32" / 2.4 10' / 3 m cable	510-332	1050-1131		
3/32" / 2.4 12' / 4 m cable	512-332	1050-1132		
3/32" / 2.4 15' / 5 m cable	515-332	1050-1133		
	w/ Miller® Connection		w/ Lincoln® Rear Connection	
.045" / 1.2 15' / 5 m cable	M515-3545	1050-1172		
1/16" / 1.6 10' / 3 m cable	M510-116	1050-1161		
1/16" / 1.6 12' / 4 m cable	M512-116	1050-1167		
1/16" / 1.6 15' / 5 m cable	M515-116	1050-1173		
3/32" / 2.4 15' / 5 m cable	M515-332	1050-1175		

Note: All No.5 MIG Guns are furnished with 5" Radius conductor tubes.

No.6 MIG Gun Assembly / Contact Tips

No.6 MIG Gun Assemblies with 'Standard' Consumables

600 AMP Air Cooled



Description	Part No.	Model No.	Part No.	Model No.
	w/ Tweco® Rear Connection (Requires Adapter Plug)		w/ Euro-Kwik® Rear Connection	
1/16" / 1.6 15' / 5 m cable	615-116	1060-1207		
3/32" / 2.4 15' / 5 m cable	615-332	1060-1217		
Description	w/ Miller® Connection		w/ Lincoln® Rear Connection	
	Part No.	Model No.	Part No.	Model No.
.045" / 1.2 15' / 5 m cable	M615-3545	1060-1227		
1/16" / 1.6 15' / 5 m cable	M615-116	1060-1232		
3/32" / 2.4 15' / 5 m cable	M615-332	1060-1242		

Note: All No.6 Mig-Guns are furnished with 5" radius conductor tubes.

Contact Tips - All Guns Standard, Tapered & Heavy Duty Styles



Part No. 11H-35



Part No. 14AH-364



Part No. 16S-35

Wire Size Inches/ Metric	Tip I.D. Inches/ Metric	Mini & No. 1			No. 2, 3, & 4			No. 5		No. 6 Standard 3/8" Tip H D Tip
		Standard	Optional Heavy Duty	Optional Tapered	Standard	Optional Heavy Duty	Optional Tapered	Standard Recess	Optional 1/8" Recess	
.023" / 0.6 mm	.031" / 0.79 mm	11-23 1110-1100		11T-23 1110-1300	14-23 1140-1100		14T-23 1140-1300			
.030" / 0.8 mm	.038" / 0.97 mm	11-30 1110-1101	11H-30 1110-1201	11T-30 1110-1301	14-30 1140-1101		14T-30 1140-1301			
.035" / 0.9 mm	.044" / 1.12 mm	11-35 1110-1102	11H-35 1110-1202	11T-35 1110-1302	14-35 1140-1102	14H-35 1140-1202	14T-35 1140-1302	15H-35 1150-1202		16S-35* 1160-1102
.040" / 1.0 mm	.048" / 1.22 mm	11-40 1110-1103	11H-40 1110-1203	11T-40 1110-1303	14-40 1140-1103	14H-40 1140-1203	14T-40 1140-1303			16S-40* 1160-1103
.045" / 1.2 mm	.054" / 1.37 mm	11-45 1110-1104	11H-45 1110-1204	11T-45 1110-1304	14-45 1140-1104	14H-45 1140-1204	14T-45 1140-1304	15H-45 1150-1204	15HFC-45 1150-1254	16S-45* 1160-1104
.052" / 1.3 mm	.064" / 1.65 mm				14-52 1140-1105	14H-52 1140-1205	14T-52 1140-1305	15H-52 1150-1205	15HFC-52 1150-1255	16S-52* 1160-1105
1/16" / 1.6 mm	.073" / 1.85 mm				14-116 1140-1106	14H-116 1140-1206	14T-116 1140-1306	15H-116 1150-1206	15HFC-116 1150-1256	16S-116* 1160-1106
5/64" / 2.0 mm	.090" / 2.29 mm				14-564 1140-1109	14H-564 1140-1209		15H-564 1150-1209	15HFC-5644 1150-1259	16S-564* 1160-1109
3/32" / 2.4 mm	.106" / 2.67 mm							15H-332 1150-1210	15HFC-332 1150-1260	16S-332* 1160-1110
7/64" / 2.8 mm	.120" / 3.05 mm							15H-764 1150-1211	15HFC-764 1150-1261	16S-764* 1160-1111
1/8" / 3.2 mm	.144" / 3.66 mm							15H-18 1150-1212	15HFC-18 1150-1262	16S-18* 1160-1112
3/64" AL / 1.2 mm	.059" / 1.50 mm		11AH-364 1110-1213		14A-364 1140-1113	14AH-364 1140-1213		15AH-364 1150-1213		16AS-364* 1160-1113
1/16" AL 1.2 mm	.082" / 1.85 mm					14AH-116 1140-1214		15AH-116 1150-1214		16AS-116* 1160-1114

* 16S Tips- when used in No. 5 Mig-Guns require a 55S style diffuser. Use 55S-SWL or 55S-HL for 5/32 tip recess. Use 55S-SW or 55S-H for 3/8 tip recess.

Standard Nozzles & Nozzle Insulators - All Guns

Standard Nozzles & Nozzle Insulators- All Guns



Part No. 21T-37



Part No. 22T-37-SS



Part No. 23-62



Part No. 21-50



Part No. 22-62



Part No. 23-62-F

Gun Model	Nozzle Style	Insulator	3/8" / 9.5 mm Bore	1/2" / 12.7 mm Bore	5/8" / 15.9 mm Bore	3/4" / 19.1 mm Bore
21 Series						
Mini-Mig-Gun (Standard)	Self-insulated, tip flush		21-37-F 1210-1102	21-50-F 1210-1112	21-62-F 1210-1122	
No. 1 (Standard)	Self-insulated, 1/8" tip recess		21-37 1210-1100	21-50 1210-1110	21-62 1210-1120	
	Optional, tapered, self-insulated, (*1/8" tip recess), (**tip flush)		21T-37* 1210-1300 21T-37-F** 1210-1302			
22 Series: * 034A Insulator must be used with this series nozzle.						
No.2 (Standard)	Adjustable, recess to projection	0032 1320-1100		22-50 1220-1110	22-62 1220-1120	
	Optional, short-stop, 1/8" tip recess	0032 1320-1100	22-37-SS 1220-1301	22-50-SS 1220-1111	22-62-SS 1220-1121	
	Optional, tapered, tip flush	0032 1320-1100	22T-37-SS 1220-1522			
23 Series: * Use SZFN diffuser with this series on a #2 MIG gun.						
No. 3 (Standard)	Self-insulated, 1/8" tip recess		23-37 1230-1100	23-50 1230-1110	23-62 1230-1120	23-75 1230-1130
	Self Insulated, 3/8" tapered		23T-37 1230-1300			
	Optional, self-insulated, tip flush		23-37-F 1230-1102	23-50-F 1230-1112	23-62-F 1230-1122	23-75-F 1230-1132
	Optional, heavy duty self-insulated, 1/8" tip recess			23H-50 1230-1210	23H-62 1230-1220	23H-75 1230-1230
	Optional, heavy duty self-insulated, tip flush				23H-62-F 1230-1222	

Note: 21-50 nozzle installed in all 150 AMP WeldSkill® MIG guns.
22-50 nozzle installed in all 250 AMP WeldSkill® MIG guns.

Standard Nozzles & Nozzle Insulators - All Guns / Optional Arc Spot

Standard Nozzles & Nozzle Insulators - All Guns



Part No. 34A



Part No. 24AT-37-SS



Part No. 24A-50



Part No. 24CT-62-F



Part No. 25T-75

Gun Model	Nozzle Style	Insulator	3/8" / 9.5 mm Bore	1/2" / 12.7 mm Bore	5/8" / 15.9 mm Bore	3/4" / 19.1 mm Bore
24 Series						
No. 4 (Standard)	Adjustable, recess to projection	034A 1340-1100		24A-50 1240-1110	24A-62 1240-1120	24A-75 1240-1130
	Optional, short-stop, 1/8" Tip recess	034A 1340-1100	24A-37-SS 1240-1101	24A-50-SS 1240-1111	24A-62-SS 1240-1121	24A-75-SS 1240-1131
	Optional, ss tapered, 1/8" Tip recess	034A 1340-1100	24AT-37-SS 1240-1301			
	Optional, heavy duty, adjustable	034A 1340-1100		24AH-50 1240-1210	24AH-62 1240-1220	24AH-75 1240-1230
	Optional, heavy duty, short stop	034A 1340-1100		24AH-50-SS 1240-1211	24AH-62-SS 1240-1221	24AH-75-SS 1240-1231
	Optional, coarse thread, 1/8" Tip recess	34CT 1340-1400	24CT-37-S 1240-1404	24CT-50-S 1240-1414	24CT-62-S 1240-1424	24CT-75-S 1240-1434
	Optional, coarse thread Tip flush	34CT 1340-1400		24CT-50-F 1240-1412	24CT-62-F 1240-1422	
	Optional, coarse thread, 1/2" Tip recess	34CT 1340-1400			24CT-62-R 1240-1423	24CT-75-R 1240-1433
25 Series						
No. 5 (Standard)	Coarse thread, 1/8" Tip recess	35CT 1350-1400		25CT-50 1250-1410	25CT-62 1250-1420	25CT-75 1250-1430
	Optional, self-insulated, 1/8" Tip recess				25I-62 1250-1120	25I-75 1250-1130
26 Series				5/8" / 15.9 mm Bore	3/4" / 19.1 mm Bore	7/8" / 22 mm Bore
No. 6 (Standard)	Self-insulated, 1/8" Tip recess			26I-62 1260-1120	26I-75 1260-1130	
	Optional, coarse thread, 1/8" Tip recess	36CT		26CT-62 1260-1420	26CT-75 1260-1430	

Optional Arc Spot



Part No. 21-62-FAS



Part No. 25CT-125-FAS

Type	Mini & No. 1	No. 2	No. 3	No. 4	No. 5
Flat Arc Spot	21-62-FAS 1210-1520 (5/8" bore)	22-62-FAS 1220-1520 (5/8" bore)	23-75-FAS 1230-1530 (3/4" bore)	24A-62-FAS 1240-1520 (5/8" bore)	25CT-125-FAS 1250-1560 (1-1/4" bore)
				24A-75-FAS 1240-1530 (3/4" bore)	25CT-162-FAS 1250-1570 (1-5/8" bore)
				24A-100-FAS 1240-1550 (1" bore)	

Nozzles & Standard Diffusers / Standard Conductor Tubes

Standard Diffusers



Part No. 0052



Part No. 55SW

Mini MIG Gun	No. 1	No. 2	No. 3 & 4	No. 5		
35-50 1500-1100 (standard)	0051 1510-1101 (standard)	0052 1520-1101 (standard)	054A 1540-1103 (standard)	55SW 1550-1101 (note: 1)	(use with 16S tips) 55S-SW 1550-1110 (note: 1)	(use with 16S tips) 55S-SWL 1550-1120 (note: 1)
35-50A 1500-1101 (use with AL wire)	51-23 1510-1100 (use with .023 wire)	52-23 1520-1100 (use with .023 wire)	054K with slip in tips	0055 1550-1100 (note: 2)	(use with 16S tips) 55S-H 1550-1111 (note: 4)	(use with 16S tips) 55S-HL 1550-1121
		52FN 1520-1102 (use with No. 3 & 4 nozzles)		055H 1550-1102 (note: 3)		

Diffusers for No. 5 & 6 MIG Guns must be used with conduits as follows:

Note: 1 = 45-3545, 45-116, 45N-3545 (small wire)

Note: 2 = 45-564, 45N-116

Note: 3 = 45H-332, 45H-764, 45H-18

Note: 4 = All Note 2 & 3 conduits

Standard Conductor Tubes



Part No. 61-60



Part No. 62J-60



Part No. 65J-60

Degree/ Bend	Mini	No. 1	No. 2	No. 3	No. 4	No. 5	No. 6
						5" Radius	5" Radius
45°	35-60-45 1600-1101	61-45 1610-1101	62J-45 1620-1300	63J-45 1630-1110	64J-45 1640-1105	65J-45 1650-1110	66J-45 1660-1825
60° (standard)	35-60-60 1600-1102	61-60 1610-1102	62J-60 1620-1301	63J-60 1630-1111	64J-60 1640-1106	65J-60 1650-1111	66J-60 1660-1826

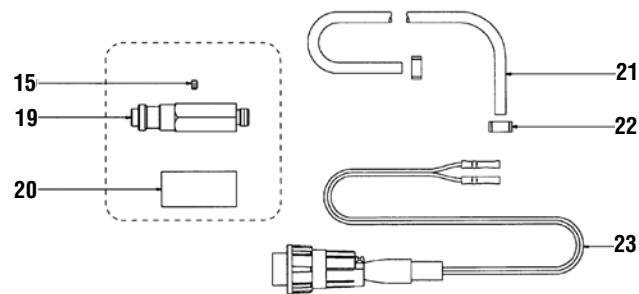
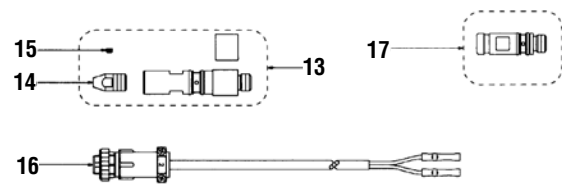
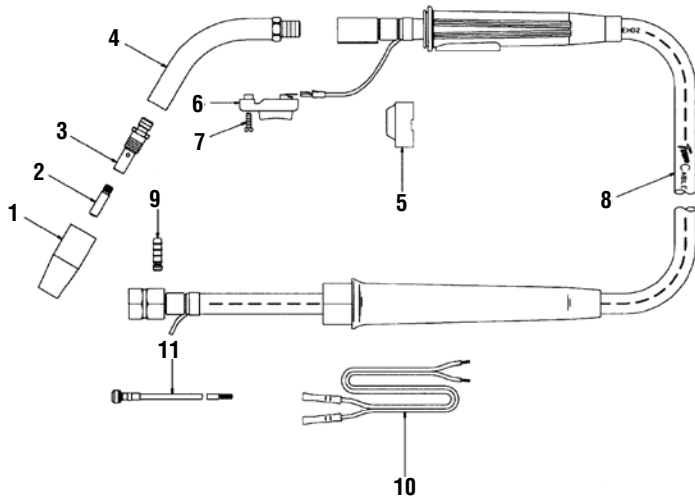
Optional Standard Conductor Tubes

Mini MIG Gun			Conductor Tube Extensions			No. 3 & 4	No. 5
			No. 3 & 4	No. 5			
60° For use with aluminum wire	35-60A-60 1600-1002	Extension 4" 180°	64A-4EX 1640-1301	65-4EX 1650-1301	Extension 45°	64EX-45 1640-1311	65EX-45 1650-1311
Flexible conductor tube	35-60-F 1600-1140	Extension 6" 180°	64A-6EX 1640-1302	65-6EX 1650-1302	Extension 60°	64EX-60 1640-1312	65EX-60 1650-1312
		Extension 8" 180°	64A-8EX 1640-1303	65-8EX 1650-1303	Extension 80°	64EX-80 1640-1313	

Note: Extensions are designed to fit standard conductor tubes. Conduits must be replaced when installing conductor tube extensions.

Mini MIG Gun Replacement Parts

Mini MIG Gun Parts Breakdown

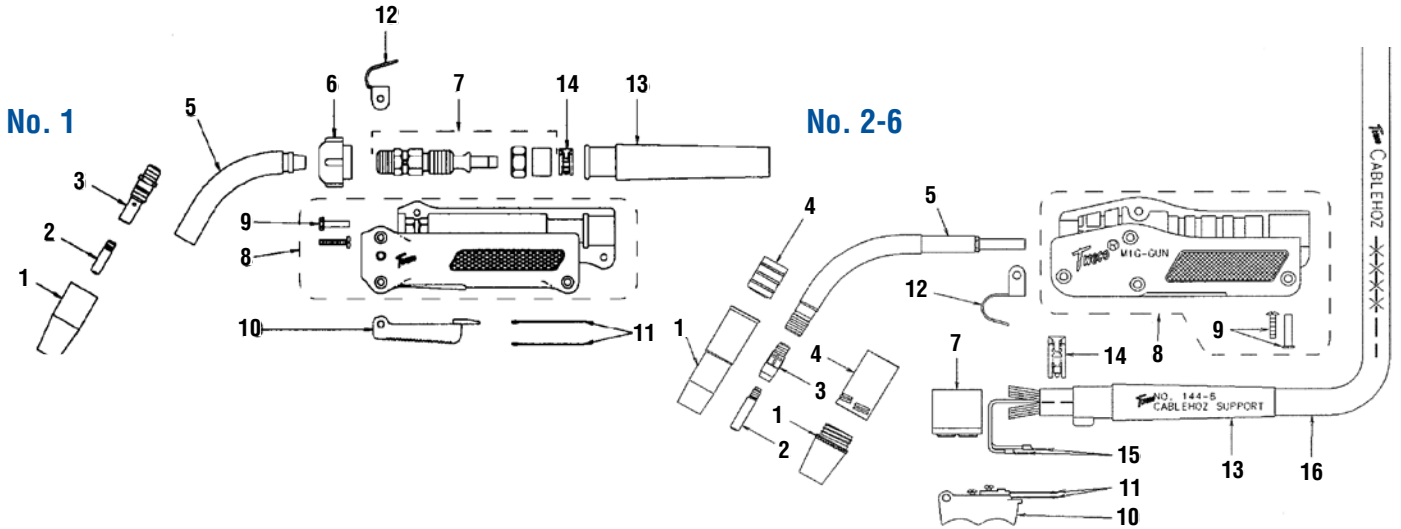


Item No.	Descriptions	Part No.	Model No.
1	Nozzles	S/C	S/C
2	Contact tips	S/C	S/C
3	Diffusers	S/C	S/C
4	Conductor tubes	S/C	S/C
5	Handle cap	35-80A-1	2000-2081
6 & 7	Trigger and screw	35-90	2000-2090
8	Cable assembly 10' cable with handle & support	35-010A	1700-2126
8	Cable assembly 12' cable with handle & support	35-012A	1700-2127
8	Cable assembly 15' cable with handle & support	35-015A	1700-2128
9	Gas nipple	35-170-5	2000-2175
10	Control wire	35K-350-1	2000-2352
11	Conduits	S/C	S/C
13	Miller® connector plug	170M	2000-2810
14	Miller® connector plug end cap	174M-N	2040-2184
15	Set screw	044C	2040-2044
16	Miller® control wire plug assembly	MK-354-M	2602-2402
17	Tweco® standard connector plug	35K-174C	2000-2169
19	Lincoln® SP200 connector plug	044C	2040-2044
20	Lincoln® connector plug insulator	LAK-352-1	2641-2030
21	Gas hose, 18"	MK-353-24	2642-2210
22	Hose clamp	AK-353-2A	2642-2302
23	Lincoln® control wire assembly	35SP-354	2000-2354

S/C = See Consumable Parts Listing

No. 1- 6 MIG Gun Replacement Parts

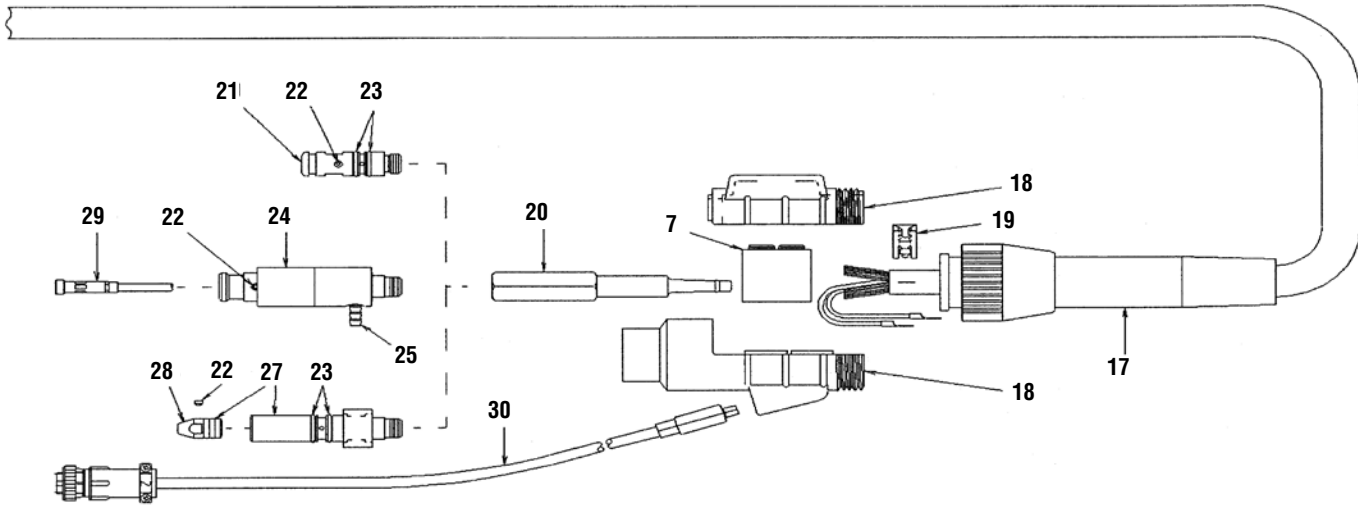
No. 1 - 6 MIG Gun Parts Breakdown



Item No.	Description	No. 1	No. 2	No. 3	No. 4	No. 5	No. 6
1	Nozzles	Standard consumable parts					
2	Contact tips	Standard consumable parts					
3	Diffusers	Standard consumable parts					
4	Nozzle insulators	Standard consumable parts					
5	Conductor tubes	Standard consumable parts					
6	Conductor tube retaining nut	061R 2010-2061					
7	Front power connector	101R 2010-2103	0102 2020-2102	0102 2020-2102	0104 2040-2104	0104 2040-2104	0104 2040-2104
7	Rear power connector	0104 2040-2104	0104 2040-2104	0104 2040-2104	0104 2040-2104	0104 2040-2104	0104 2040-2104
8	Handle	0081 2010-2081	0083 2030-2083	0083 2030-2083	084A 2040-2084	0085 2050-2085	0085 2050-2085
9	Handle binder post & screw	122FM 2020-2122	122FM 2020-2122	122FM 2020-2122	124FM 2040-2124	124FM 2040-2124	124FM 2040-2124
10	Trigger assembly	0091 2010-2091	0092 2020-2092	0092 2020-2092	094R 2040-2096	094R 2040-2096	094R 2040-2096
11	Trigger blades (2 ea.)	091C 2010-2093	092C 2020-2094	092C 2020-2094	094C 2040-2093	094C 2040-2093	094C 2040-2093
12	Gun hanger	0152 2020-2152	0152 2020-2152	0152 2020-2152	0154 2040-2154	0154 2040-2154	0154 2040-2154
13	Front cable support	141-6 2010-2141	142-6 2020-2142	142-6 2020-2142	144-6- 2040-2144	145-6 2050-2145	145-6 2050-2145
14	Front cable clamp	132-12 2020-2132	132-12 2020-2132	132-12 2020-2132	134-14 2040-2134	134-14 2040-2134	134-14 2040-2134
15	Front control terminals	244DS 2040-2245	0244 2040-2244	0244 2040-2244	0244 2040-2244	0244 2040-2244	0244 2040-2244
16	Cablehoz, per ft.	0200 1720-2100	0200 1720-2100	0300 1730-2100	0400 1740-2100	0500 1750-2100	600S 1760-2100

No. 1, 2, 3, 4, 5 & 6 MIG Gun Replacement Parts

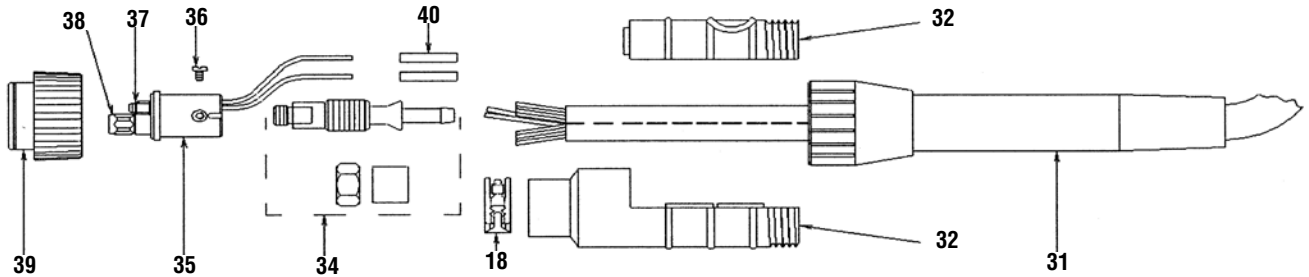
All Tweco®, Miller® and Lincoln® Direct Plug MIG Guns



Item No.	Description	No. 1	No. 2	No. 3	No. 4	No. 5	No. 6
7	Front power connector	101R 2010-2103	0102 2020-2102	0102 2020-2102	0104 2040-2104	0104 2040-2104	0104 2040-2104
7	Rear power connector	0104 2040-2104	0104 2040-2104	0104 2040-2104	0104 2040-2104	0104 2040-2104	0104 2040-2104
17	Rear support (Except Euro-Kwik®)	350-R-230-10 2035-2235	350-R-230-10 2035-2235	350-R-230-10 2035-2235	350-R-230-10 2035-2235	350-R-230-10 2035-2235	350-R-230-10 2035-2235
18	Rear case (except Euro-Kwik®)	M6RC 2060-2018	M6RC 2060-2018	M6RC 2060-2018	M6RC 2060-2018	M6RC 2060-2018	M6RC 2060-2018
19	Rear cable clamp	132-12 2020-2132	132-12 2020-2132	134-14 2040-2134	134-14 2040-2134	134-14 2040-2134	134-14 2040-2134
20	Power cable adapter (Except Euro-Kwik®)	M170-2 2020-2171	M170-2 2020-2171	M170-2 2020-2171	M170-2 2020-2171	M170-2 2020-2171	M170-2 2020-2171
21	Tweco® connector plug	350-174H 2035-2174	350-174H 2035-2174	350-174H 2035-2174	350-174H 2035-2174	176SH 2060-2177	176SH 2060-2177
22	Set screw	44C 2040-2044	44C 2040-2044	44C 2040-2044	44C 2040-2044	44C 2040-2044	44C 2040-2044
23	O-rings	224 2040-2224	224 2040-2224	224 2040-2224	224 2040-2224	225 2050-2225	225 2050-2225
24	Lincon® connector plug Direct plug gun	350-174L-H 2035-2112	350-174L-H 2035-2112	350-174L-H 2035-2112	350-174L-H 2035-2112	EL176-LH 2060-2680	EL176-LH 2060-2680
25	Gas nipple	35-170-5 2000-2175	35-170-5 2000-2175	35-170-5 2000-2175	35-170-5 2000-2175	35-170-5 2000-2175	35-170-5 2000-2175
27	Miller® connector plug direct plug gun	350-174MH 2035-2111	350-174MH 2035-2111	350-174MH 2035-2111	350-174MH 2035-2111	EL176-MH 2060-2178	EL176-MH 2060-2178
28	Miller® connector plug end cap	174M-N 2040-2184	174M-N 2040-2184	174M-N 2040-2184	174M-N 2040-2184	175M-N 2050-2	175M-N 2050-2
29	Conduit	See following pages					
30	Tweco® control wire plug, not furnished with gun	AK-354 2642-2400	AK-354 2642-2400	AK-354 2642-2400	AK-354 2642-2400	AK-354 2642-2400	AK-354 2642-2400
30	Lincoln® control wire plug, furnished with direct plug gun	LAK-354 2642-2450	LAK-354 2642-2450	LAK-354 2642-2450	LAK-354 2642-2450	LAK-354 2642-2450	LAK-354 2642-2450
30	Miller® control wire plug, furnished with direct plug gun	MSAK-354 2642-2470	MSAK-354 2642-2470	MSAK-354 2642-2470	MSAK-354 2642-2470	MSAK-354 2642-2470	MSAK-354 2642-2470

No. 1, 2, 3, 4, & 5 MIG Gun Replacement Parts / Wire Conduits - All Guns

All Euro-Kwik® MIG Guns



Item No.	Description	No. 1	No. 2	No. 3	No. 4	No. 5	No. 6
31	Rear support (Euro-Kwik® guns)	350R-230-10 2035-2235	350R-230-10 2035-2235	350R-230-10 2035-2235	350R-230-10 2035-2235	350R-230-10 2035-2235	350R-230-10 2035-2235
32	Rear Case (Euro-Kwik® guns)	X6RC 2060-2006	X6RC 2060-2006	X6RC 2060-2006	X6RC 2060-2006	X6RC 2060-2006	X6RC 2060-2006
34	Power connection (Euro-Kwik® guns)	172X-M 2020-2181	172X-M 2020-2181	172X-M 2020-2181	172X-M 2020-2181	176X-M 2060-2181	176X-M 2060-2181
35	Rear connector (Euro-Kwik® guns)	174EX-1 2040-2276	174EX-1 2040-2276	174EX-1 2040-2276	174EX-1 2040-2276	174EX-1 2040-2276	174EX-1 2040-2276
36	Screw	4M-S 2011-2004	4M-S 2011-2004	4M-S 2011-2004	4M-S 2011-2004	4M-S 2011-2004	4M-S 2011-2004
37	O-ring Euro-Kwik® guns	174EX-1G 2040-2282	174EX-1G 2040-2282	174EX-1G 2040-2282	174EX-1G 2040-2282	174EX-1G 2040-2282	174EX-1G 2040-2282
38	Conduit cap Euro-Kwik® guns	174EX-1C 2040-2279	174EX-1C 2040-2279	174EX-1C 2040-2279	174EX-1C 2040-2279	174EX-1C 2040-2279	174EX-1C 2040-2279
39	Connector nut Euro-Kwik® guns	174X-2 2040-2177	174X-2 2040-2177	174X-2 2040-2177	174X-2 2040-2177	174X-2 2040-2177	174X-2 2040-2177
40	Butt connectors	35-350-1 2000-2351	35-350-1 2000-2351	35-350-1 2000-2351	35-350-1 2000-2351	35-350-1 2000-2351	35-350-1 2000-2351

Wire Conduits - All Guns

Wire Size	Mini MIG Gun (All Models)		No. 1 & 2 (All Models)		No. 3 & 4 (All Models & No. 5 X-Guns)		No. 5 & 6 (All Except X-Guns)	
	15 / 5 m	20 / 6 m	15 / 5 m	25 / 7.6 m	15 / 5 m	25 / 7.6 m	15 / 5 m	25 / 7.6 m
.023" 0.6 m	23-40-15 1400-1123		42-23-15 1420-1103					
.030" - .035" 0.8-0.9 mm	35-40-15 1400-1133	35-40-20 1400-1134	42-3035-15 1420-1113	42-3035-25 1420-1115				
.040" - .045" 1.0-1.2 mm	45-40-15 1400-1143	45-40-20 1400-1144	42-4045-15 1420-1123	42-4045-25 1420-1125				
.035" - .045" 0.9-1.0 mm					44-3545-15 1440-1103	44-3545-25 1440-1105	45-3545-15 1450-1103	45-3545-25 1450-1105
.052" - 1/16" 1.3-1.6 mm					44-116-15 1440-1113	44-116-25 1440-1115	45-116-15 1450-1113	45-116-25 1450-1115
5/64" 2.0 mm					44-564-15 1440-1123	44-564-25 1440-1125	45-564-15 1450-1123	45-564-25 1450-1125
3/32" 2.4 mm							45H-332-15 1450-1133	
7/64" 2.8 mm							45H-764-15 1450-1143	
1/8" 3.2 mm							45H-18-15 1450-1153	
.030" - .035" AL 0.8 - 0.9 mm	35TF-40-10* 1400-1031		42N-3545-15 1420-1003		44N-3545-15 1440-1003		45N-3545-15 1450-1003	
.040" - 3/64" AL 1.0 - 1.2 mm	45TF-40-10* 1400-1041		42N-3545-15 1420-1003		44N-3545-15 1440-1003		45N-3545-15 1450-1003	
1/16" 1.6 mm					44N-116-15 1440-1012		45N-116-15 1450-1013	



Part No. 42-3035-15



Part No. 44-3545-15

*TF liners not recommended for lengths over 10' / 3 m

TwecoTong® Electrode Holders / Parts / Ground Devices

TwecoTong® Electrode Holders

- * Feature reversible top and bottom insulators.
- Efficient 6-position jaw patterns.
- Fully insulated.
- Protected springs.
- Ball-point cable connection.

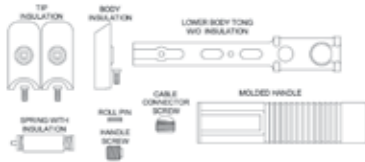


Part No. A-14-HD

Part No.	Model No.	AMP Capacity	Body Alloy	Electrode Capacity	Cable Connection Capacity	Length (inches)	Length (mm)
A-532	9110-1101	200	Copper	thru 5/32"	Ball-point thru 2/0	8-1/2"	216
A-316	9110-1102	250	Copper	thru 3/16"	Ball-point thru 2/0	9-1/4"	235
A-732	9110-1103	300	Copper	thru 7/32"	Ball-point thru 2/0	10"	254
A-14	9110-1104	350	Copper	thru 1/4"	Ball-point thru 4/0	11"	279
A-14-HD	9110-1105	400	Copper	thru 1/4"	Double ball-point thru 4/0	12"	305
A-38-HD	9110-1106	500	Copper	thru 3/8"	Double ball-point thru 4/0	13-1/4"	336

Part No.	Model No.	Description	AMP Capacity	Electrode Capacity	Cable Connection Capacity	Length (inches)	Length (mm)
9120-1000	04TT	Tweco-Tite® holder	400	1/16" thru 1/4"	thru 3/0	9"	229

TwecoTong® Electrode Holder Parts



Description	A-532	A-316	A-732	A-14	A-14-HD	A-38-HD
Tip Insulation w/ screw	A-532-1P (9910-2102)	A-532-1P (9910-2102)	A-732-1P (9910-2302)	A-732-1P (9910-2302)	A-732-1P (9910-2302)	A-38-HD-1P (9910-2602)
Body insulation	A-532-3 (9910-2103)	A-532-3 (9910-2103)	A-532-3 (9910-2103)	A-14-3 (9910-2403)	A-14-3 (9910-2403)	A-38-HD-3 (9910-2603)
Molded handle	A-532-7 (9910-2107)	A-316-7 (9910-2207)	A-732-7 (9910-2307)	A-14-7 (9910-2407)	A-14-HD-7 (9910-2507)	A-38-HD-7 (9910-2607)
Handle screws	AL-300-12 (9910-2712)	AL-300-12 (9910-2712)	AL-300-12 (9910-2712)	AL-300-12 (9910-2712)	AL-300-12 (9910-2712)	AL-300-12 (9910-2712)
Cable connector screw	A-532-24 (9910-2124)	A-532-24 (9910-2124)	A-532-24 (9910-2124)	A-14-24 (9910-2424)	A-14-24 (9910-2424)	A-14-24 (9910-2424)

Heavy Duty Rotary Ground Devices

Tweco® Roto-Ground is a highly efficient device for grounding weldments while being rotated on turning rolls or positioners. The 2" shaft shoulders up to a steel nut which the user welds to his rotating work or fixture. Tweco® Roto-Grounds have no brushes, springs or mercury. A simple tension adjusting bolt provides maximum efficiency.



Part Nos. GCRG-140 RG-140 RG-240 RG-440 RG-640

Part No.	Model No.	AMP Capacity	Cable Capacity	No. of Heads	Shaft Stud	Length (inches)	Length (mm)
GCRG-140	9210-1314	400	1-4/0	1	3/4" NC		
RG-140	9250-1114	400	1-4/0	1	3/4" NC	8"	203
RG-230	9250-1123	600	2-3/0	1	1-1/8" NC	10-1/4"	260
RG-240	9250-1124	800	2-4/0	1	1-3/8" NC	10-5/8"	270
RG-440	9250-1144	1500	4-4/0	2	1-3/8" NC	10-5/8"	270
RG-640	9250-1164	2000	6-4/0	3	1-3/8" NC	10-5/8"	270

Ground Clamps

Roto-Work Grounding Clamps

Tweco® Roto-Work Ground Clamps are designed primarily to work in conjunction with the Tweco® Roto-Ground Device. However, they may also be used for other high amperage grounding applications. The Roto-Ground shaft screws into the tapped back of the Roto-Work Clamp. The clamp is quickly attached or moved from one rotating weldment or fixture to the other without removing the Roto-Ground from it. Saves welding down time. Roto-Work Clamps are made from 98% copper alloy. They come in 600, 1200 and 2000 ampere capacity. No. WCRG-600 ampere and WCRG-1200 ampere have single tightening screws. No. WCRG-2000 has two tightening screws. Number WCRG-600 works only with No. RG-230 due to its smaller shaft size. Large tightening screws and ample contact surface area provide cool, efficient operation.



Part No. GC-600-75

Part No.	Model No.	AMP Capacity	Fits Roto-Ground	Clamp Contact	Throat Height	Throat Dept	Over-all Height	Over-all Width	Tapped For
WCRG-600	9255-1106	600	RG-230	6-1/4 sq/in	2-1/2"	2-1/2"	5-3/4"	2-1/2"	1-1/8" NC
WCRG-1200	9255-1112	1200	RG-240/440	9 sq/in	3"	3"	6-3/4"	3"	1-3/8" NC
WCRG-2000	9255-1120	2000	RG-440/640	12 sq/in	3"	3"	6-3/4"	4"	1-3/4" NC
GC-600-75	9255-1075	Clamp only - tapped 3/4" for RG-140 Roto-Ground only							

Ground Clamps

GC-300 Ground Clamp

- 98% copper alloy jaws
- Fully insulated spring



Part No. GC-300



Part No. SGC-300



Part No. FGC-300

SGC-300 Ground Clamp

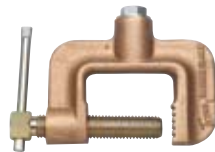
- Steel body with direct ground through copper alloy jaw
- SGC-500 w/copper shunt
- SGC-300 w/o copper shunt

FGC-300 Ground Clamp

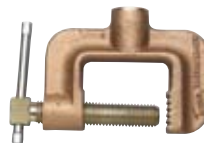
- 98% copper alloy
- 200, 300 & 500 AMP flat jaw

Part No.	Model No.	AMP Capacity	Jaw Opening	Cable Connection Capacity	Length (inches)	Length (mm)
GC-200	9205-1120	200	1" - depth 3"	Ball-point thru 1/0	6"	157
GC-300	9205-1130	300	1-1/2" - depth 4"	Ball-point thru 3/0	8-1/2"	216
GC-500	9205-1150	500	2" - depth 5-1/4"	Ball-point thru 4/0	10"	254
SGC-300	9205-1230	300	2" - depth 1-3/4"	1/2" stud connection	9"	228
SGC-500	9205-1250	500	2" - depth 1-3/4"	1/2" stud connection	9"	228
FGC-200	9205-1320	200	5/8" - depth 2"	Ball-point thru 1/0	5"	127
FGC-300	9205-1330	300	1" - depth 3-1/2"	Ball-point thru 3/0	7-1/4"	184
FGC-500	9205-1350	500	1-1/2" - depth 3-1/4"	Ball-point thru 4/0	9-1/4"	234

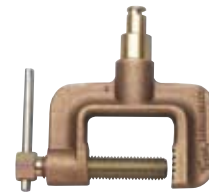
C-Type Ground Clamps



Part No. GC-600-50



Part No. GC-600-DBP

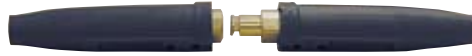


Part No. GC-600-TMP

Part No.	Model No.	AMP Capacity	Type Cable Connection	Throat Opening	Throat Depth
GC-600-50	9210-1150	500	1/2" cap screw	2-1/2"	1-3/8"
GC-600-DBP	9210-1201	600	Double ball-point	2-1/2"	1-3/8"
GC-600-TMP	9210-1202	600	Tweco® male plug	2-1/2"	1-3/8"

Cable Connectors

MPC connectors are equipped with heat and oil resistant covers, zinc plated cover and ball-point cable screws. Connectors are interchangeable with older Tweco® MBP connectors. The Whip cable connector is used when downsizing cable to an electrode holder. It is a No. 2 male connector with cable hole sized to fit 4, 2, 1 or 1/0 cable. The 2-1-MPC will fit any No. 2 or No. 4 female connector.



Part No. 2-MPC

Part No.	Model No.	Description	Type Cable Connection	Cable Capacity	Std. Pkg.
MPC Series Positive-CAM Mechanical Connection - Zinc Plated Type Cable & Cover Screws					
1-MPC	9425-1100	Complete connection	Single ball-point	4, 2, 1	1 ea. male/female
1-MPC-1	9425-1110	Male half	Single ball-point	4, 2, 1	2 ea. male
1-MPC-2	9425-1120	Female half	Single ball-point	4, 2, 1	2 ea. female
2-MPC	9425-1200	Complete connection	Single ball-point	1/0, 2/0, 3/0	1 ea. male/female
2-MPC-1	9425-1210	Male half	Single ball-point	1/0, 2/0, 3/0	2 ea. male
2-MPC-2	9425-1220	Female half	Single ball-point	1/0, 2/0, 3/0	2 ea. female
4-MPC	9425-1400	Complete connection	Double ball-point	3/0 or 4/0	1 ea. male/female
4-MPC-1	9425-1410	Male half	Double ball-point	3/0 or 4/0	2 ea. male
4-MPC-2	9425-1420	Female half	Double ball-point	3/0 or 4/0	2 ea. female
2-1-MPC	9425-1140	Whip connection	Single ball-point	4, 2, 1, 1/0	2 ea.

Cable Connector Replacement Parts

Part No.	Model No.	Description
MPC Series Positive-CAM - Zinc Plated Type Cable & Cover Screws		
1R-C	9940-2103	Insulating cover only, all 1-MPC
24R-MBP	9940-2124	Insulating cover only, all 2 & 4 MPC
1-MBP-10	9940-2100	Cable connection screw, zinc plated, all 1-MPC
A-532-24	9910-2124	Cable connection screw, zinc plated, all 2-MPC
A-14-24	9910-2424	Cable connection screw, zinc plated, all 4-MPC

Terminals and Twecolugs®

- Screw-on terminals-fits
- Terminal size 1/2" NC



Part No.	Model No.	Fits Tweco® Connection No.
2-SF-50	9505-1152	No. 2 & No. 4 male half

Female Terminals

- Stud Hole Size 17/32"



Part Nos: 1-AF



1-OF



2-AF



2-OF

Part No.	Model No.	Description	Accepts Male Ends	Std. Pkg.
1-AF	9510-1100	45° angle	1-MPC	24
1-OF	9510-1101	180° offset	1-MPC	24
2-AF	9510-1110	45° angle	4-MPC, 2-MPC	24
2-OF	9510-1111	180° offset	4-MPC, 2-MPC	24

Terminals / Lugs / Splicers

Ball-Point Connection Type

- Stud hole size 17/32"



Part No. 10-45C



Part No. 40-180



Part No. 10-180C



Part No. 40-45

Part No.	Model No.	Description	Cable Capacity	Std. Pkg.
10-45	9915-1100	45° Angle*	thru 1/0	12
10-45C	9515-1101	45° Angle**	thru 1/0	12
10-180	9515-1102	180° Offset*	thru 1/0	12
10-180C	9515-1103	180° Offset**	thru 1/0	12
40-45	9515-1110	45° Angle*	thru 4/0	12
40-45C	9515-1111	45° Angle**	thru 4/0	6
40-180	9515-1112	180° Offset*	thru 4/0	12
40-180C	9515-1113	180° Offset**	thru 4/0	6

* Less insulated cover

** Insulated cover

Terminals- Heavy Duty Type

- Mechanical Ball-point



Part No. 140-HD-180



Part No. 240-HD-180



Part No. 140HD-180C

Part No.	Model No.	Description	Cable Capacity	Size of Stud Hole	Length (inches)	Length (mm)
140-HD-180	9515-1120	180° offset	3/0 & 4/0	21/32"	4-3/8"	111
140-HD-180C	9515-1121	w/ insulated cover 180° offset	3/0 & 4/0	21/32"	5-1/2"	140
240-HD-180	9515-1122	180° offset	3/0 & 4/0	21/32"	4-5/8"	131

Twecolugs® - Crimp or Solder Type

- For use of Tweco® "Lug-Set"



Part No. T-62



Part No. T-810

Part No.	Model No.	Welding Cable Size	AMP Rating	Size of Stud Hole	I.D. Solder Socket	Std. Pkg.
T-62	9520-1104	6 thru 2	150	17/32"	.461"	50
T-120	9520-1105	1 thru 2/0	225	17/32"	.559"	50
T-3040	9520-1107	3/0 & 4/0	250	17/32"	.660"	25
T-40HD	9520-1109	4/0 heavy-duty	325	21/32"	.776"	25
Power Cable Lugs						
T-810	9520-1101	8 thru 10	50	13/64"	.238"	200
T-68	9520-1102	6 thru 8	70	21/64"	.289"	125
T-46	9520-1103	4 thru 6	90	21/64"	.347"	100

Cable Splicers

- Ball point type



Part No. BP-410



Part No. BP-1030



Part No. BP-2040

Part No.	Model No.	Fitting Type	Cable Capacity	Std. Pkg.
BP-410	9605-1101	Ball point	4, 2, 1, 1/0	12
BP-1030	9605-1103	Ball point	1/0, 2/0, 3/0	12
BP-2040	9605-1105	Double ball point	2/0, 3/0, 4/0	6

Panel Receptacles / Mounting Plates / Block & Punch

Panel Receptacles

- Use with MPC or MBP connectors



TSF Version



BPF Version

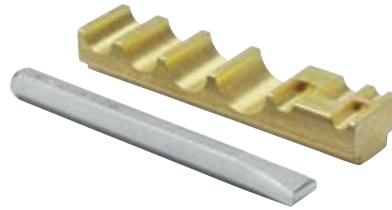
Part No.	Model No.	Fitting Type	Fits Tweco Connector	For Cable Size	Cable Attachment
1516-BPF	9580-1100	Ball-point	No. 1	4, 2, 1	5/16" ball point
114-TSF	9580-1101	Threaded	No. 1	4, 2, 1, 1/0	5/16" thread, stud
238-TSF	9580-1102	Threaded	No. 2, 4	1/0, 2/0, 3/0	3/8" thread, stud
2916-BPF	9580-1103	Ball-point	No. 2, 4	1/0, 2/0, 3/0	9/16" ball point
212-TSF	9580-1104	Threaded	No. 2, 4	1/0, 2/0, 3/0	1/2" - 20 thread, stud

Replacement Parts

Part No.	Model No.	Description
A-532-24	9910-2124	9/16" ball point screw, use with 1516-BPF
AL-300-12A	9910-2714	7/16" ball point screw, use with 2916-BPF

Tweco® "Lug-set" Block & Punch

- For use with Twecolugs®



Part No.	Model No.	Description
12-BP	9900-1140	Block & punch

Replacement Machine Plugs-Ball Point Connection



Part No. 1-M-T



Part No. 2-M-T

Part No.	Model No.	Taper Length	Taper Dimension	Cable Capacity
1-M-T	9505-1800	1-1/8"	21/64" to 23/64"	4, 2, 1
2-M-T	9505-1801	1-1/8"	21/64" to 23/64"	1/0, 2/0, 3/0

Receptacle Conversion Adapters



Part No.	Model No.	Fits Cam Locking Machine Receptacle	Fits Tweco® Male Plug Ends
2-CLC	9505-1811	Large-11/16" I.D.	No. 2-M, 4-M, 2-MPC, 4-MPC

Jacket Stripping Cable Cutting Hand Tool



Part No.	Model No.	Description
T-908	9900-1190	Tweco® cable cutting hand tool



Flexible Spring Claw

Bright plated steel spring reaches into inaccessible, awkward places.



Just press plunger



Jaws open wide!
Release plunger —
jaws clamp shut!

- Overall length 23-1/2"
 - Std. pkg. 1 dz.
 - Pkg. wt. 2 lbs., 12 oz.
- Part No. 0016**

- Overall length 13-1/2"
 - Std. pkg. 1 dz.
 - Pkg. wt. 2 lbs.
- Part No. 0017**

Swinger

Combination reversible pick and hook. Like an extra long finger for jobs in awkward places. Just swivel out the end you want, the other tucks safely away! Literally a tool of "1,001 uses!"

- Std. pkg. 1 dz.
- Pkg. wt. 1 lbs., 10 oz.
- Overall length 7-7/8"
- Lightweight aluminum handle

Part No. SW-10



Inspection Mirrors For All Angle Viewing

Original All-Angle Ball Joint Mirrors with brushed finish stainless steel mirror backs.

Fast, accurate visual inspection of hidden areas with an almost limitless number of positions. Double ball joint links swivel mirrors for viewing to 360°. Ullman's precision engineered links are manufactured from tempered spring steel to withstand the stresses of constant repositioning, move freely, hold desired position.

- Replaceable clear glass mirrors for perfect reflection.
- Telescoping and pocket models.
- Non-rotating inner hex rods on telescopic models prevent mirrors from swinging out of alignment when in use.
- Insulating vinyl grip on all models.



K-2 Series Rectangular Telescoping Mirror 2-1/8" x 3-1/2"

- Overall length 11-1/4", extends to 15-1/4"
- Part No. OK-2**

- Extra Long Handle
 - Overall length 17-1/4", extends to 27-1/2"
- Part No. K-2L**

- Magnifying
 - Overall length 11-1/4", extends to 15-1/4"
- Part No. K-2M**

- Magnifying, Extra Long handle
 - Overall length 17-1/4", extends to 27-1/2"
- Part No. K-2ML**



A-2 Series Circular Pocket Mirror 7/8" diameter

- Overall length 7-1/2"
- Part No. OA-2**

- Magnifying
 - Overall length 7-1/2"
- Part No. A-2M**