

The First Universal Plasma Torch!

The 1Torch™ RPT torch is the first plasma cutting torch that performs with virtually all plasma cutting power supplies. The 1Torch™ works with high frequency start systems, CD start systems, touch start systems and moving parts (blow back) start systems. Install the 1Torch™ on your current plasma power supply and you immediately benefit from the latest in high performance torch technology available.



One Year Torch & Leads Warranty

Ergonomic Torch Handle

With a new, innovative, easy-to-use torch trigger release, encapsulated protected torch head and precisely engineered grip, the 1Torch™ RPT torch is both easy and comfortable to use.

Extended or Protected Consumable Parts

We designed our consumable parts to adapt to your cutting style. By simply changing the shield cup, you can either have:

- An extended tip for greater visibility and control and precision drag cutting at low power.
- A protected tip for on-the-plate drag cutting at high power up to 100 amps.

Precision Engineered Torch Consumable Parts

The 1Torch™ RPT torch introduces a completely new tip technology. Plasma gas management is an integral part of the tip design. Each tip is uniquely tuned to optimize cut performance at its rated cutting current. The result is precision gas management, longer consumable parts life and better cut performance across the entire range of 1Torch™ tips.

Lower Consumable Parts Inventories and Costs

The less than 20 consumable parts used with the 1Torch RPT torch can replace over 575 different consumable parts used over a broad range of plasma systems.

Improved Leads

1Torch™ Leads are lightweight, extremely flexible and tough – the ideal combination of durability and ease of use.

Selecting the Right Torch Package for Your Needs . . . It's as easy as 1, 2, 3!

1. Torch and Leads Selection

The torch and leads selection chart gives you all the information you'll need to select the right torch. Torches are grouped into two sections – SL60™ and SL100™ hand torches. Find the appropriate section, decide whether the standard RPT connection or the ATC™ torch connection is right for you, then select the torch with the desired amperage range and leads length.

2. Adapter Kit Selection

Select the appropriate adapter kit from the adapter kit selection chart. If you selected a torch with the ATC connection, you will also need an ATC receptacle adapter (see torch and leads selection chart).

3. Spare Parts Selection

From the spare parts selection chart, select an RPT spare parts kit or specific consumable parts that best suit your cutting requirements.

Torch Connection Options

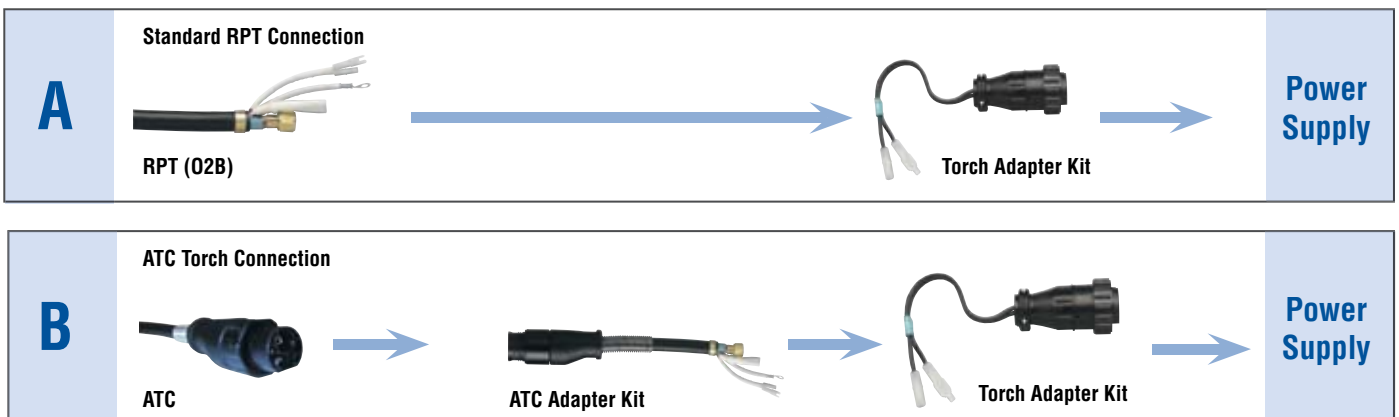
The diagram below shows the differences between the Standard RPT and the ATC Torch connections.

ATC™ (Advanced Torch Connector) Quick Disconnect Option

Our quick disconnect design brings extra flexibility to any plasma system. Imagine being able to change out a damaged plasma cutting torch, easily convert from a hand to a machine torch operation, or simply put on a different size torch all in the matter of a few seconds and not have to use any tools to complete the task!

ATC™ Lead Extensions for Improved Versatility

You can add substantial flexibility and versatility to your cutting operations with the use of lead extensions. Quick disconnect lead extensions, in 15 ft., 25 ft. and 50 ft. lengths, make it easy and efficient to add or subtract lead length according to the job requirements.



1Torch™

Torch and Lead Selection

Listed below are the torch and lead selection charts for the SL60™ and SL100™ Hand 1Torch™ RPT torches.

Ordering Information

Hand Torches

SL60™

Light/Medium Duty Torch 20-60 Amps



SL100™

Medium/Heavy Duty Torch 30-100 Amps



A

Standard RPT (O2B) Torch Connection

Torch and Leads

SL60 Hand Torch (20-60 Amps)



Part No.	Description
7-5200	SL60, 75°, 20' (6.1m) Torch/Leads
7-5201	SL60, 75°, 50' (15.2m) Torch/Leads

Standard RPT (O2B) Torch Connection

Torch and Leads

SL100 Hand Torch (30-100 Amps)



Part No.	Description
7-5202	SL100, 75°, 20' (6.1m) Torch/Leads
7-5203	SL100, 75°, 50' (15.2m) Torch/Leads

B

ATC™ Torch Connection

Torch and Leads

SL60 Hand Torch w/ ATC™ (20-60 Amps)



Part No.	Description
7-5204	*SL60, 75°, 20' (6.1m) Torch/Leads
7-5205	*SL60, 75°, 50' (15.2m) Torch/Leads

ATC™ Adapter Kit

ATC Receptacle Adapter



Part No.	Description
7-5207	ATC™ Receptacle Connector

ATC™ Lead Extensions

Lead Extensions -Standard

Part No.	Description
7-7544	15' (4.5m) Lead Extension
7-7545	25' (7.6m) Lead Extension
7-7552	50' (15.2m) Lead Extension

ATC™ Torch Connection

Torch and Leads

SL100 Hand Torch w/ ATC (30-100 Amps)



Part No.	Description
7-5206	*SL100, 75°, 20' (6.1m) Torch/Leads
7-5208	*SL100, 75°, 50' (15.2m) Torch/Leads

ATC™ Adapter Kit

ATC™ Receptacle Adapter



Part No.	Description
7-5207	ATC™ Receptacle Connector

ATC™ Lead Extensions

Lead Extensions -Standard

Part No.	Description
7-7544	15' (4.5m) Lead Extension
7-7545	25' (7.6m) Lead Extension
7-7552	50' (15.2m) Lead Extension

NOTE: Total lead length including torch and extension(s), should not exceed the maximum length specified by the power supply manufacturer.

* This receptacle adapter is required for each power supply using an ATC™ torch connection. This is connected to the torch adapter kit specific to each power supply.

**Thermal Dynamics® Cutskill®
Replacement Consumables Available!**

- ESAB® / L-TEC®
- HYPERTHERM®
- INNERLOGIC®
- THERMAL DYNAMICS®
- KOMATSU®
- MILLER®
- WEIDEMANN®
- WHITNEY®
- LINCOLN®
- W.T.C®
- OTC®

Adapter Kit Selection for Hand 1 Torch™ RPT Torch

Torch Adapter Kits-The model of the plasma cutting system must be known to determine the adapter kit required.

Manufacturer Power Supply Model	Part No.
Airco®/Boc®	
PCS-43	7-3425
PCS-53, PCS-80, PCS-90	7-3435
Cebora®	
Pocket 25	7-3476
Century®	
50	7-3438
82100	7-3430
82020*, 82050*, M2050*	7-3476
Daihen®	
SC-60P	7-3432
MRAT-70	7-3437
Dayton®	
3W722A*, 5Z031B*	7-3476
ESAB® (yellow)	
PCM-SMi, 500i, 625i, PCS-43	7-3425
PCS-53, 80, 90	7-3435
ESP-100i	7-3426
PCM-750i, 875, 1000i, 1125	7-3429
Sidewinder 30, 55, 105	7-3434
Powercut® 1250, 1500	7-3462
Powercut® 875/1125	7-3465
Harris®	
System 50, 65, 100	7-3439
Hobart®	
Smoothcut 30, 625	7-3425
Smoothcut 50 (single gas), 100	7-3426
Smoothcut 50 (dual gas)	7-3428
Smoothcut II 35A, 60A, 100A	7-3427
Fab Shop	7-3440
Cybercut 2050*	7-3457
Hypertherm®	
Max® 40, HT® 40 (H/F Start)	7-3430
Max® 70, Max® 80, Max® 100 w/ & w/o Q.D.	7-3430
Max® 42*, 43*, 40cs*	7-3454
powermax® 600*, 800*, 900* w/ Q.D.	7-3454
powermax® 1100*	7-3455
powermax® 1000*, 1250*	7-3461
Max® 40cs* (w/o Q.D.)	7-3476
powermax® 380*	7-3477
powermax® 600* w/o Q.D.	7-3480
powermax® 800*, 900* w/o Q.D.	7-3481
powermax® 1650	7-3483
powermax® 350	7-3484
powermax® 190C	7-3485
Innerlogic®	
SR-45i	7-3451
L-TEC® (green)	
PCM-31, SMi, 32i/34i, VPi	7-3425
PCM-500i, 625i, PCS-80i	7-3425
PCM-50A, 70, 80, 52i/54i, 82i/84i	7-3426
ESP-100i, PCM-50, PCM-100 (Single Gas)	
PCM-50, PCM-100 (Dual Gas)	
PCS-40	7-3430
PCM-750i, 1000i	7-3435
PCM-101	7-3436

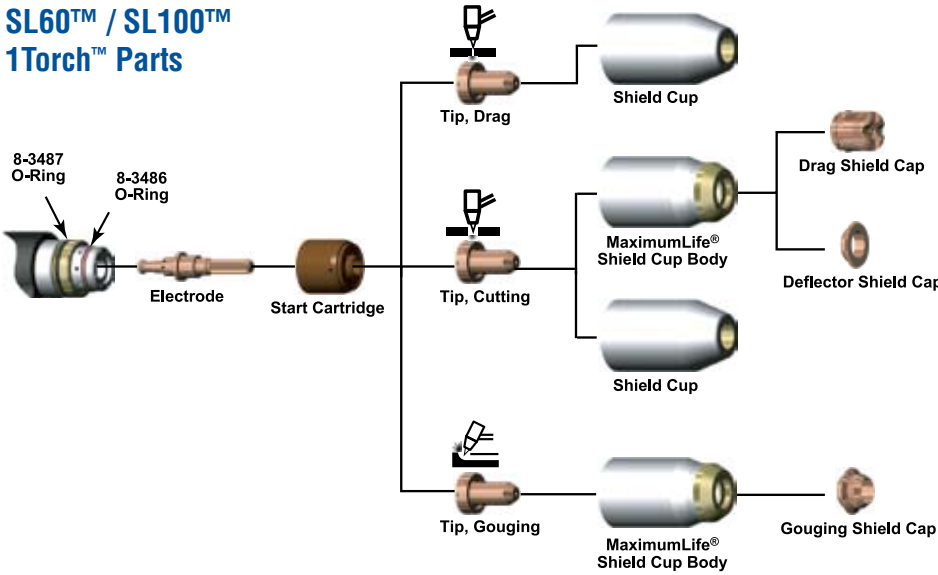
Manufacturer Power Supply Model	Part No.
Lincoln®	
Pro-Cut 40	7-3486
Pro-Cut 60	7-3431
Marquette®	
12/150, 12/200	7-3476
Matco®	
2020*, 2050*	7-3476
Miller®	
Plazcut 60†/Zipcut	7-3432
Spectrum® 250D, 500, 750	7-3433
Spectrum® 700, 1000, 1250, PLUS	7-3430
Spectrum® 3080*	7-3456
Spectrum® 650*, 701*, 2050*	7-3457
Spectrum® 300*	7-3476
Spectrum® 375*	7-3477
Spectrum® 625*	7-3478
*The Miller Spectrum 1000 with serial numbers beginning LF are not compatible with 1Torch RPT Torches.	
Multiquip MQ®	
PCX50SS	7-3437
Nu-Tecsys®	
Omnicut 375	7-3438
PCA-30/60, 65	7-3441
OTC	
Panasonic D-5000, D-7000	7-3437
P-Tron®	
P-Tron 75, 100	7-3437
PowCon®	
Starcut	7-3430
Smith®	
SPC-30, 20-50, 40-80	7-3442
PowerPro 55, 75	7-3487
Snap-on®	
YA-3440	7-3430
YA-2230*, YA-5550*, YA-5550A*	7-3476
Solar®	
SOL 2105	7-3430
SOL 2106	7-3430
SOL 2020* (118-009, 118-010),	7-3476
SOL 2050* (118-015, 118-016)	
Thermal Dynamics®	
PAK® 3XR, 5XT, 5XR, 6XR, 7XR, 625XR, 750XR	7-3446
PAK® 8XR, 10XR, 1000XR, 1250XR,	7-3434
PakMaster® 75, 100	7-3434
PakMaster® 50XL/XLP, 75XL/XLP, 100XL/XLP	7-3447
CUTMASTER™ 50, 75, 80XL, 100	7-3447
PakMaster® 25, 38XL, EconoPAK® 25	7-3443
Drag-Gun® 38, PAK® 4Xi, 6Xi	
PAK® 2XT, Dynapak® 110	
PakMaster® 50 w/ Smart Torch (Q.D.)	7-3445
EconoPAK® 50	7-3449
EconoPAK® 100	7-3450
PAK® 5	7-3444
PAK® 10	7-3436

*Non-HF Systems. †The Miller PlazCut machines with Serial Numbers beginning JE are not compatible with 1Torch™ RPT Torches.

NOTES: Each Adapter Kit includes connection fitting, electrical connectors and installation instruction sheets for the selected power supply. CEBORA is a registered trademark of Cebora S.p.A.; DAIHEN is a registered trademark of Daihen Inc.; ESAB and L-TEC are registered trademarks of ESAB AB; HARRIS and LINCOLN are registered trademarks of Lincoln Electric Co.; HOBART is a registered trademark of Hobart Brothers Co.; HYPERTHERM, Max and powermax are registered trademarks of Hypertherm, Inc.; MILLER and Spectrum are registered trademarks of Miller Electric Mfg. Co.; MULTIQUIP is a registered trademark of Multiquip, Inc.; NU-TECSYS is a registered trademark of Nu-Tecsys, Inc.; P-TRON is a registered trademark of P-Tron Plasma/Tech Systems; SMITH is a registered trademark of Smith Equipment Co.; INNERLOGIC is a trademark of Innerlogic; Thermal Dynamics, PAK, CUTMASTER, PakMaster, EconoPAK, Dynapak and Drag-Gun are registered trademarks of Thermal Dynamics Corp.

1Torch™ Spare Parts List

**SL60™ / SL100™
1Torch™ Parts**



1Torch™ Consumables / Parts

Description	Part No.
O-Ring	8-3487
O-Ring	8-3486
Electrode, MaximumLife®	9-8215
Start Cartridge	9-8213
Tip, 20A, Drag	9-8205
Tip, 30A, Drag	9-8206
Tip, 40A, Drag	9-8207
Tip, 40A, Cutting	9-8208
Tip, 50/55A, Cutting	9-8209
Tip, 60A, Cutting	9-8210
Tip, 70A, Cutting	9-8231
Tip, 80A, Cutting	9-8211
Tip, 90/100A, Cutting	9-8212
Tip, A, Gouging	9-8225
Tip, B, Gouging	9-8226
Tip, C, Gouging	9-8227
Tip, D, Gouging	9-8228
Shield Cup	9-8218
Shield Cup Body, MaximumLife®	9-8237
Shield Cap, Drag, 40A	9-8244
Shield Cap, Drag, 50-60A	9-8235
Shield Cap, Drag, 70-100A	9-8236
Shield Cap, Mach, 40A	9-8245
Shield Cap, Mach, 50-60A	9-8238
Shield Cap, Mach, 70-100A	9-8239
Shield Cap, Deflector	9-8243
Shield Cap, Gouging	9-8241

Description	Part No.
Spare Parts Kit, 30 Amp	5-2550
Spare Parts Kit, 40 Amp	5-2551
Spare Parts Kit, 50/55 Amp	5-2552
Spare Parts Kit, 60 Amp	5-2553
Spare Parts Kit, 70 Amp	5-2554
Spare Parts Kit, 80 Amp	5-2555
Spare Parts Kit, 90/100 Amp	5-2556

Note: All Spare Parts Kits include ten (10) Tips, five (5) Electrodes and one (1) Start Cartridge Standard on SL100 RPT Torches, SL60 RPT Torches, and for all RPT Torches

Accessories

Single Stage Air Filter
Part No. 7-7507



Remote Pendant

- Control, 20 ft. (6.1m)
 - For use with Machine Torch
- Part No. 7-3460



Leather Leads Cover

- Part Nos:
- 9-1260 - 20 ft. (6.1m)
 - 9-1270 - 25 ft. (7.6m)
 - 9-1280 - 50 ft. (15.2m)



Straight Line Cutting Guide
Part No. 7-8911



Cutting Guide Kits

Circle Guild Kit
Part No. 7-3291



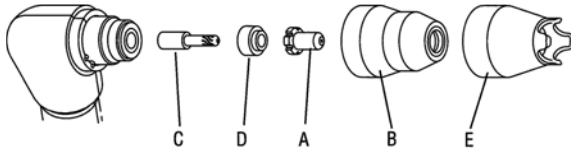
Roller/Radius Kit
Part No. 7-7501



Deluxe Kit
Part No. 7-8910



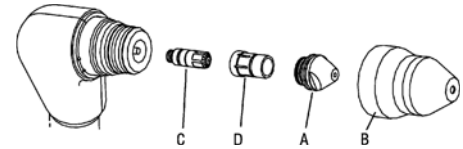
KEY - 1



Torch	Key - 1	Item	Part No.
PCH 20	A	Tip-20 Amp Air	8-3218
	B	Shield Cup	8-3214
	C	Electrode-Air	9-6006
	D	Gas Distributor	8-3233
PCH 25	A	Tip-20 Amp Air	9-4476
	B	Shield Cup	9-6003
	C	Electrode-Air	9-6006
	D	Gas Distributor	9-6007
PCH/M 35 *Long life parts cannot be used mixed with standard parts.	A	Tip-35 Amp Air	9-6000
	A	Tip-Drag Cut Air	9-6001
	A	Tip-Heavy Duty	9-6120
	A	Tip-Gouging-Groove Air	9-6002
	A*	Tip-Stand Off (long life)	9-6500
	A*	Tip-Drag (long life)	9-6501
	B	Shield Cup	9-6003
	B*	Shield Cup (long life)	9-6503
	C	Electrode Air	9-6006
	C*	Electrode (long life)	9-6506
	D	Gas Distributor	9-6007
	D*	Gas Distributor (long life)	9-6507
	E	Shield Cup-Crown	9-6004
	PCH/M 70	A	Tip-35 Amp Air/O ₂ /N ₂
A		Tip-70 Amp Air/O ₂ /N ₂	9-6009
A		Tip-70 Amp ArH ₂	9-6013
A		Tip-Gouging (.089)	9-6014
A		Tip-Gouging (.110)	9-6015
A		Tip-Gouging (.125)	9-6019
B		Shield Cup (Tip Exposed)	9-6016
B		Shield Cup-Crown	9-6017
B		Shield Cup-Gouging	9-6018
B		Shield Cup-Long	9-6024
C		Electrode-Air/O ₂ /N ₂	9-6019
C		Electrode-ArH ₂	9-6021
C		Electrode-Gouging Air/N ₂	9-6107
C		Electrode-Gouging Ar/H ₂	9-6108
D		Gas Distributor	9-6022
N/S		Tip-Wrench	8-4053
N/S		Electrode-Wrench	9-5620

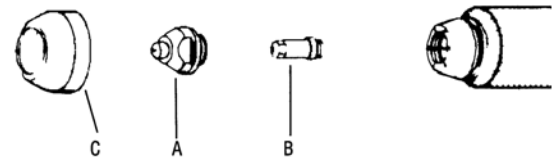
N/S= Not Shown

KEY - 2



Torch	Key - 2	Item	Part No.
PCH/M 140	A	Tip-35 Amp Air/N ₂	9-6025
	A	Tip-70 Amp Air/N ₂	9-6026
	A	Tip-105 Amp Air/N ₂	9-6027
	A	Tip-140 Amp Air/N ₂	9-6028
	A	Tip-Gouging (1 Ring) (.110)	9-6037
	A	Tip-Gouging (2 Ring) (.125)	9-6038
	A	Tip-Gouging (3 Ring) (.156)	9-6039
	A	Tip-Gouging (4 Ring) (.171)	9-6040
	B	Shield Cup	9-6045
	B	Shield Cup-Crown	9-6046
	B	Shield Cup-Gouging	9-6047
	B	Shield Cup-Long Air/N ₂	9-6054
	C	Electrode-Air/N ₂	9-6048
	C	Electrode-Gouging Air/N ₂	9-6110
	D	Gas Distributor	9-6051
	D	Gas Distributor-Gouging	9-6112
	N/S	Cooling Tube	9-6052
	N/S	Cooling Tip-Gouging	9-6113

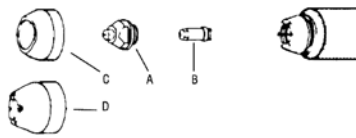
KEY - 3



Torch	Key - 3	Item	Part No.
PCH/M 150	A	Tip-150 Amp Air	9-5746
	A	Tip-100 Amp Air	9-5747
	A	Tip-50 Amp Air	9-5748
	A	Tip-150 Amp Oxygen	9-5751
	A	Tip-100 Amp Oxygen	9-5752
	A	Tip-50 Amp Oxygen	9-5753
	A	Tip-150 Amp N ₂	9-5767
	A	Tip-100 Amp N ₂	9-5766
	A	Tip-50 Amp N ₂	9-5765
	A	Tip-150 Amp ArH ₂	9-5775
	A	Tip-Gouging (.120)	9-5755
	A	Tip-Gouging (.078)	9-5756
	B	Electrode-Air	9-5749
	B	Electrode-Oxygen	9-5760
	B	Electrode-N ₂ or ArH ₂	9-5754
	C	Cup-Std. Ceramic front	9-5750
	C	Cup-Tip Exp. Ceramic	9-5758
	C	Cup-Standard Copper	9-5790
	C	Cup-Tip Exp. Copper	9-5801

Replacement Consumables

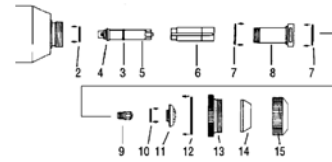
KEY - 4



Torch	Key - 4	Item	Part No.
PCH/M 51	A	Tip-10-40 Amp Air	9-5718
	A	Tip-10-60 Amp Air	9-5631
	A	Tip-65 Amp Air	8-3321
	A	Tip-Gouging	9-5724
	B	Electrode-Air (Knurl)	9-5720
	B	Electrode-Air	9-5633
	C**	Cup-Ceramic	9-5630
	C*	Std-metal (8-2159)	9-5800
	C**	Cup-Hi Strength	8-2152
	C	Cup-Hi Strength long	8-2151
	C**	Cup-Black phenolic	8-2159
	D*	Crown-Metal (8-2159)	9-5779
	D	Cup-Ceramic crown	8-5526
PCH/M 52	A	Tip-35 Amp Air	9-5702
	A	Tip-45-55 Amp Air	9-5618
	A	Tip-60-70 Amp Air	9-5707
	A	Tip-80 Amp Air	9-5782
	A	Tip-105 Amp Air	9-5708
	A	Tip Gouging	8-5129
	B	Electrode-Air (plated)	9-5619
	B	Electrode-Air (unplated)	8-3331
	B	Electrode (Multi-Gas)	9-5711
	C	Cup-Ceramic	9-5617
	C	Cup-Ceramic Crown	9-5694
	C	Cup-Phenolic Std.	9-5781
	C	Cup-Ceramic Gouge	8-5128
	C	Cup-Hi Strength short	9-5712
	D*	Crown-Metal (9-5781)	9-5780
	D*	Standard-Metal (9-5781)	9-5799

* Requires part in parentheses for use
** Recommended for gouging

KEY - 6

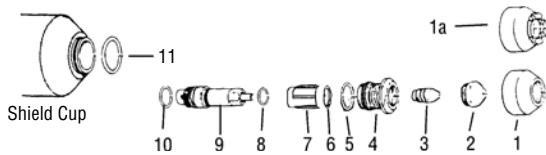


Torch	Key - 6	Item	Part No.
PCH/M-6B	2	O-Ring	8-0531
	3	O-Ring	8-2960
	4	O-Ring	8-0527
	5	Electrode holder (includes items 3 & 4)	8-6615
	6	Gas Distributor	8-6569
	7	O-Ring	9-2956
	8	Liner (includes 2 & 7)	8-6571
	9	Electrode (General purpose)	8-6578
	9	Electrode (Low amp)	8-6586
	10	O-Ring	9-2863
	11*	Tip-100 Amp	8-6580
	11*	Tip-200 Amp	8-6575
	11*	Tip-300 Amp	8-6582
	11*	Tip-400 Amp	8-6572
	12	Gasket	8-6512
	13	Outer Insulator	8-6581
	14	End Piece	8-6514
	15	End Cap	8-6515
	N/S	Electrode Holder Wrench	8-6574
N/S	Electrode Wrench	8-6573	
N/S	Liner/Tip Wrench	8-6517	

*All tips include items 10 & 7

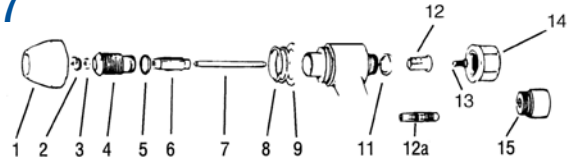
N/S = Not Shown

KEY - 5



Torch	Key - 5	Item	Part No.
PCH 100	1	Shield Cup (hand torch)	8-1100
	1a	Crown Shield Cup	8-1113
	2	Tip-105 Amp	9-4341
	2	Tip-70 Amp	9-4342
	2	Tip-35 Amp	9-4343
	3	Electrode	9-4340
	4	Liner	8-1106
	5	O-Ring (included with Item 4)	8-1135
	6	O-Ring (included with Item 7)	8-1134
	7	Gas Distributor	9-4339
	8	O-Ring (included with Item 9)	8-1133
9	Electrode Holder	8-1108	
10	O-Ring (included with Item 9)	8-1152	
11	O-Ring (on shield cup)	8-0556	

KEY - 7



Torch	Key - 7	Item	Part No.
PCH/M-4B, 4BT	1	Shield Cup (hand torch)	8-4088
	2	Tip-100 Amp	8-4153
	3	Gas Distributor	9-2421
	4	Liner	8-4154
	5	O-Ring (included with Item 4)	9-2960
	6	Sleeve	8-4182
	7	Electrode	8-4073
	8	O-Ring (included with Item 1)	8-0554
	9	Gasket	8-4069
	11	O-Ring for PCH 4B	8-0530
	11	O-Ring for PCM 4B	8-0532
	12	Collet (w/ 8-0525) -4B only	8-4156
	12a	Collet (w/ 8-0525) -4BT only	8-4197
	13	Spring	8-4050
	14	Back Cap: PCH-4B	8-4158
15	Back Cap: PCM-4B	8-4159	